



ULTIMATE  
SOLUTIONS

Together We're Better!

Private Label  
Branding  
Available!

## YOUR FAMILY FOR A COMPLETE RANGE OF CLEANING SOLUTIONS



**Sandia**  
PRODUCTS

Your Ultimate Choice in  
Profitable Cleaning Performance!



**CALL US TODAY IF YOU HAVE ANY QUESTIONS,  
OR WOULD LIKE TO PLACE AN ORDER!**

Ultimate Solutions Corporate Office  
15571 Container Lane, Huntington Beach, CA 92649  
Phone: 800-983-5834

[www.sandiaplastics.com](http://www.sandiaplastics.com)  
[www.mercuryfloormachines.com](http://www.mercuryfloormachines.com)



We Manufacture  
with Pride in the  
U.S.A.

ULTIMATE SOLUTIONS CATALOG  
Sandia Products and Mercury Floor Machines Product Lines

## ABOUT US

We are an international organization that designs, develops and manufactures innovative cleaning products to liberate the cleaning world at work! Ultimate Solutions includes our family of brands: Sandia Products and Mercury Floor Machines. One of our core values is to "stop spreading dirt and start spreading joy"! Our revolutionary ideas will change the way you think about cleaning. We really care about the cleaning business because we really care about people. Using our knowledge and expertise, we want to change perspectives by making life easier and more fun for those who clean the world.

## ABOUT OUR PRIVATE LABEL PROGRAM

**Build your Brand Recognition, Reputation and Business Skills**



*This logo represents machines that may be Private Labeled!*

Our entire Sandia Products and Mercury Floor Machines lines are available for private branding. We partner with you to develop your machine labels or mold-in-graphic as well as the custom color scheme of your machines. Custom machine operating manuals and sell sheets are also provided. Our Private Label Program has been developed to allow our clients to WOW their buyers with the highest quality machines representing their own brand!

## CLIENT WARRANTY INFORMATION

All equipment is inspected and tested before shipping from the manufacturer. All parts are warranted to be new and free from defects in workmanship and material, under normal use to the original retail purchaser. This warranty limits manufacturer's liability for defects in workmanship or materials for replacement of defective parts only. The manufacturer accepts no liability for incidental or consequential damages arisen from the use of any equipment, defective or not. This warranty is in lieu of all expressed or implied warranties and is extended only to the original retail purchaser. Manufacturer sales and service representatives are not authorized to waive or alter the terms of this warranty, or to increase the obligations of the manufacturer under the warranty. Parts replaced or repaired under this warranty are warranted for the remainder of the original warranty period.

Labor is only provided by authorized service centers. If an authorized service center is not near you, it is the purchaser's responsibility to take their machine to an authorized service center. International clients are responsible for all shipping needed for complete warranty. Freight charges and travel charges are not covered by the manufacturer.

The manufacturer covers up to one (1) year (365 days) of service labor at the manufacturer's calculated hourly labor rate/repair time when performed by a manufacturer-authorized service provider. Ultimately, labor reimbursement costs are at the discretion of the manufacturer. At no time is the manufacturer responsible for travel time to complete on-call repairs. After one (1) year, the original retail purchaser is responsible for all labor costs with no manufacturer reimbursement.

The original purchaser must contact the manufacturer to follow correct RMA/warranty procedures. No returns shall be authorized unless the proper RMA procedures are followed. It is the responsibility of the distributor to repair the client's equipment as soon as possible.

The manufacturer charges a 25% restocking fee for any items that are being returned to stock. Items must be new, unused, free of damage and are only good for up to 30 days. After 30 days, the manufacturer does not accept the return of any items for credit.

Authorized warranty replacement parts need to come directly from the manufacturer. Any use of any other parts will void warranty. The manufacturer does not reimburse for parts used by client that were not supplied directly for the machine under warranty.

The client must contact the manufacturer prior to working on or changing out of any parts, etc. Do not send parts or equipment back to the manufacturer without an RMA Number and approval. No labor will be paid for, nor parts cost paid for or reimbursed, that have not previously been approved by the manufacturer. All warranty work must be approved and authorized to qualify, and appropriate warranty procedures must be followed.

The warranty starts on the purchase date by the original purchaser from an authorized distributor, subject to proof of purchase. If proof of purchase cannot be identified, the warranty start date is ninety (90) days after the date of sale to the authorized distributor.

## TABLE OF CONTENTS

### Sandia Products

Sniper 12-Gallon Carpet Extractors .....	3
OPTIMIZER 12-Gallon Portable Carpet Extractors .....	4
Sniper 12-Gallon Carpet Extractor Upgrades & Optional Accessories .....	5
Sniper 12-Gallon Hard Surface Extractor .....	6
Sniper 12-Gallon Dual Purpose Hard Surface & Carpet Extractor .....	7
Sniper 24-Gallon Flood Pumper.....	8
Dragon 6-Gallon & 12-Gallon Restroom Cleaner .....	9
Dragon 6-Gallon & 12-Gallon Restroom Cleaner (Continued) .....	10
Sniper 6-Gallon Carpet Extractors .....	11
Sniper 6-Gallon Carpet Extractor & Sniper Carpet Extractor Replacement Parts .....	12
Sniper Carpet Extractor Replacement Parts (Continued) .....	13-15
Indy Automotive Line .....	16
Spot Extractor Kits .....	17
Spot Extractor Optional Accessories .....	18
Spot Extractor Replacement Parts .....	19
Raven 10-Quart Backpack Vacuums .....	20
Raven 6-Quart Backpack Vacuums .....	21
Hipster 6-Quart Hip Vacs .....	22
Backpack and Hip Vacuum Replacement Bags .....	23
Backpack and Hip Vacuum Optional Accessories.....	24
Backpack and Hip Vacuum Sidewinder Tools .....	25
Backpack and Hip Vacuum Replacement Parts.....	25-27
Gen-Air Air Mover.....	28
Solution Tank .....	28
FORCE 14 Upright Vacuum .....	29
FORCE 14 Upright Vacuum Filters and Bags.....	29

### Mercury Floor Machines

Floor Machines .....	30-32
Pad Drivers.....	32
Burnishers .....	33
Air Movers .....	34
Solution Tank .....	34
ACE Backpack Vacuum .....	35
Wet / Dry Vacuums.....	35

## SNIPER 12-GALLON CARPET EXTRACTORS



Manufactured with  
Pride in the U.S.A.



**Warranty:** Lifetime warranty on body, 2-years on vacuum motors, 1-year on 200, 300, 500 PSI pumps, 2-years on 100 PSI pump, 1-year on all electrical components, 90-days on tools and accessories.

- Powerful vacuum motors offer up to 205" water lift for efficient solution recovery that results in better extraction and faster carpet drying.
- High performance motors stay cool with an innovative air intake design that uses the vacuum's own cooling fans to pull cool, outside air over the motors, reducing motor temperature and preventing overheating.
- Heated units include an in-line heater that lets you extract with 180 degree Fahrenheit solution!
- 12-gallon solution and recovery tanks allow for quick and easy fill and dump disposal, reducing downtime.
- Waist-high controls prevent bending and stooping to operate the machine. The controls are recessed in the machine and stay protected during use, in transit or in storage.
- 10" non-skid, non-marking wheels make stair climbing easy and do not scuff floors.
- Roto-molded polyethylene tanks withstand the toughest working environments and resist dents, chips and cracks.
- Includes 25-foot long safety power cord(s).
- Optional crush-resistant, 25-foot vacuum and solution hoses, "S" shaped stainless steel wand with dual spray jets and 4" stainless steel upholstery tool available. Order separately.

### APPLICATIONS

The best tool designed for deep cleaning carpet. Designed to be portable and to be used where a Truck Mount Machine cannot reach.

### SPECIFICATIONS

**Solution Pump:** 100, 200, 300 or 500 PSI

**In-Line Heated Units:** 2000 Watt, up to 200° F

**Vac Motor:** Dual 2-Stage or Dual 3-Stage Available

**Water Lift:** Up to 205"



**Available in Single or Dual Stack Units!**

**Ask about 230 Volt Models.**

**Dual Cord Hook are standard on all 6 and 12 Gallon models.**

### MODELS

Model	Pump	Vac Motors	In Line Heat	Cord	Shipping Weight
<b>80-2100</b>	100 PSI	Dual 2-Stage	No	1	110 lbs.
<b>80-2100-H</b>	100 PSI	Dual 2-Stage	Yes	2	112 lbs.
<b>80-3100</b>	100 PSI	Dual 3-Stage	No	2	112 lbs.
<b>80-3100-H</b>	100 PSI	Dual 3-Stage	Yes	2	114 lbs.
<b>80-2200</b>	200 PSI	Dual 2-Stage	No	1	112 lbs.
<b>80-2200-H</b>	200 PSI	Dual 2-Stage	Yes	2	114 lbs.
<b>80-3200</b>	200 PSI	Dual 3-Stage	No	2	114 lbs.
<b>80-3200-H</b>	200 PSI	Dual 3-Stage	Yes	2	116 lbs.
<b>80-2300</b>	300 PSI	Dual 2-Stage	No	1	114 lbs.
<b>80-2300-H</b>	300 PSI	Dual 2-Stage	Yes	2	116 lbs.
<b>80-3300</b>	300 PSI	Dual 3-Stage	No	2	129 lbs.

Model	Pump	Vac Motors	In Line Heat	Cord	Shipping Weight
<b>80-3300-H</b>	300 PSI	Dual 3-Stage	Yes	2	131 lbs.
<b>80-2500</b>	500 PSI	Dual 2-Stage	No	1	131 lbs.
<b>80-2500-H</b>	500 PSI	Dual 2-Stage	Yes	2	133 lbs.
<b>80-3500</b>	500 PSI	Dual 3-Stage	No	2	131 lbs.
<b>80-3500-H</b>	500 PSI	Dual 3-Stage	Yes	2	133 lbs.
<b>80-2500-DC</b>	500 PSI	Dual 2-Stage	No	1	131 lbs.
<b>80-2500-H-DC</b>	500 PSI	Dual 2-Stage	Yes	2	141 lbs.
<b>80-3500-DC</b>	500 PSI	Dual 3-Stage	No	2	133 lbs.
<b>80-3500-H-DC</b>	500 PSI	Dual 3-Stage	Yes	2	143 lbs.

**NEW DC MOTORS FOR 500PSI MODELS 80-2500-DC & 80-3500-DC.**

\*Dual Cord Units Require (2) 20 Amp Breakers



## OPTIMIZER 12-GALLON PORTABLE CARPET EXTRACTORS



Manufactured with  
Pride in the U.S.A.



CREATE  
YOUR  
OWN  
BRAND

**Warranty:** Lifetime warranty on body, 2-years on vacuum motors, 2-years on 100 PSI pump, 1-year on 200 and 300 PSI pumps and all electrical components, 90-days on tools and accessories.

- Powerful dual, 2-stage 6.6" vacuum motors require less amp draw and provide optimal 215" water lift for efficient solution recovery that results in better extraction and faster carpet drying.
- Thermal protected, sealed motors with a patented "Eternity Brush System" provide three times longer motor brush life.
- Advanced fan and chamber motor design allow for a lower amp draw.
- High performance motors stay cool with an innovative air intake design that uses the vacuum's own cooling fans to pull cool, outside air over the motors, reducing motor temperature and preventing overheating.
- Heated units include an in-line heater that lets you extract with 180 degree Fahrenheit solution!
- 12-gallon solution and recovery tanks allow for quick and easy fill and dump disposal, reducing downtime.
- Waist-high controls prevent bending and stooping to operate the machine. The controls are recessed in the machine and stay protected during use, in transit or in storage.
- 10" non-skid, non-marking wheels make stair climbing easy and do not scuff floors.
- Roto-molded polyethylene body withstands the toughest working environments and resist dents, chips and cracks. Looks professional longer.
- Includes (2) 25-foot, 12/3-gauge safety power cords.
- Optional crush-resistant, 25-foot vacuum and solution hoses, "S" shaped stainless steel wand with dual spray jets and 4" stainless steel upholstery tool available. Order separately.

### SPECIFICATIONS

**Solution Pump:** 100, 200 or 300 PSI

**In-Line Heated Units:** 2000 Watt, up to 200° F

**Vac Motor:** Dual 6.6", 2-Stage Motors (33 Amps)

**Water Lift:** Up to 215"

**CFM:** 133

[Ask about 230 Volt Models.](#)

[Dual Cord Hook are standard on all 6 and 12 Gallon models.](#)

### APPLICATIONS

The best tool designed for deep cleaning carpet. The OPTIMIZER 12-Gallon Portable Extractor gives you the power of a Truck Mount in a portable extractor. It's class leading 6.6" vac motors are 42% more efficient, allow for more sealed suction and provide 5" more water lift than traditional 5.7" 3 stage vacuum motor. Experience more bang for your buck and the convenience of Truck Mount power in a portable extractor.

[Dual Stack/Motors in Parallel](#) is included in our standard models.

[Single Stack & Single Vac Motor](#) models are available!

**NOTE:** We have designed all of our extractors so that the working components of the machine may be easily accessed. There is plenty of room in the base of our machines for easy maintenance.

### MODELS

Model	Pump	Vac Motors	In Line Heat	Cord
<a href="#">66-2100</a>	100 PSI	Dual 2-Stage	No	2
<a href="#">66-2100-H</a>	100 PSI	Dual 2-Stage	Yes	2
<a href="#">66-2200</a>	200 PSI	Dual 2-Stage	No	2
<a href="#">66-2200-H</a>	200 PSI	Dual 2-Stage	Yes	2
<a href="#">66-2300</a>	300 PSI	Dual 2-Stage	No	2
<a href="#">66-2300-H</a>	300 PSI	Dual 2-Stage	Yes	2

\*Dual Cord Units Require (2) 20 Amp Breakers

## SNIPER 12-GALLON CARPET EXTRACTOR UPGRADES

Auto Fill and Auto Dump features available upon request for an additional charge. Factory installed options available on new extractors only and must be noted on the purchase order. Auto Dump cannot be added to units built in Dual Stack (In Parallel).

### 80-1000

Auto Fill / Auto Dump Upgrade

### 80-1001

Auto Dump Upgrade Only

### 80-1002

Auto Fill Upgrade Only

### 80-1500

Dual Stack Upgrade

## SNIPER 12-GALLON CARPET EXTRACTOR OPTIONAL ACCESSORIES



### 10-0501

4 in. Stainless Steel Upholstery Tool, Required for Machines with Heat



### 10-0512

Stainless Steel Crevice Tool



### 10-0861

12 in. Stainless Steel Dual Jet S-Bend Wand



### 80-0500

25 ft. Vacuum and Solution Hoses and Stainless Steel Dual Jet Wand Kit



### 80-0502

25 ft. Solution Hose Assembly with 1/4 in. Female and Male Quick Disconnects



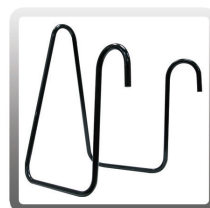
### 80-0503

25 ft. Vacuum Hose with Cuffs Assembly



### 80-0510

Black Mesh Utility Bag (24 x 36)



### HOSE HANGER

Hose Hanger for Extractors



**NOTE:** Extractors dispense water, either hot or cold, into a carpet at various rates called PSI (Pounds per Square Inch). The higher the PSI, the more water output into carpet. The solution hose dispenses the water and the vacuum hose sucks the water out of the carpet. Ultimate Solutions offers a variety of PSI and vacuum motor choices to meet the needs of your specific job.

## SNIPER 12-GALLON HARD SURFACE EXTRACTOR



Manufactured with  
Pride in the U.S.A.



### SPECIFICATIONS

**Model No: 80-5000**

**Capacity:** 12-Gallon Solution and Recovery Tanks

**Vac Motors:** (1) 2-Stage and (1) 3-Stage  
Lamb Ametek (Dual Motor)

**Solution Pump:** 1200 PSI

**Water Lift:** 170"

**Volts:** 110 / 120

**Amp Draw:** 19 / 16

**CFM:** 99

**Shipping Weight:** 150 lbs.

\*Dual Cord Units Require (2) 20 Amp Breakers

**Warranty:** Lifetime warranty on body, 2-years on vacuum motors, 1-year on pump and all electrical components, 90-days on all accessories.

- The one 2-stage and one 3-stage vacuum motors allow for 170" of water lift for efficient solution recovery that results in better extraction and faster carpet drying.
- High performance motors stay cool with an innovative air intake design that uses the vacuum's own cooling fans to pull cool, outside air over the motors, reducing motor temperature and preventing overheating. This allows for performance with less maintenance.
- Powerful 1200 PSI providing the perfect pressure for cleaning everything from tile to concrete.
- 12-gallon solution and recovery tanks allow for quick and easy fill and dump disposal, reducing downtime. Auto fill and auto dump capability allows for constant working pressure from start to finish.
- Waist-high controls prevent bending and stooping to operate the machine. Adjustments can be made standing comfortably. The controls are recessed in the machine and stay protected during use, in transit or in storage.
- 10" non-skid, non-marking wheels make stair climbing easy and do not scuff floors.
- Roto-molded polyethylene tanks withstand the toughest working environments and resist dents, chips and cracks. They have a professional look with ultimate durability.
- Includes (2) 25-foot, 12/3-gauge safety power cords.
- Includes 50-foot auto fill hose, 50-foot auto dump hose, 25-foot vacuum hose, 25-foot solution hose, 13" self priming hose and (2) 25-foot safety power cords. Wand and hard surface tools sold separately.
- An optional 7" or 12" turbo cleaning tool is available for hard surface cleaning and is built with stainless steel components. Order separately.

### APPLICATIONS

A powerful and versatile portable extractor that is specifically designed for high-pressure cleaning of hard surfaces. With an adjustable 400 to 1200 PSI pump, you can clean tile, concrete and everything in between!

[Ask about 230 Volt Models.](#)

[Dual Cord Hook are standard on all 6 and 12 Gallon models.](#)

### OPTIONAL ACCESSORIES



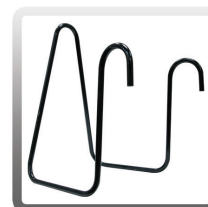
**10-0859**

12 in. Hard Surface  
Turbo Brush Tool



**10-0874**

7 in. Hard Surface  
Turbo Brush Tool



**HOSE HANGER**

Hose Hanger for  
Extractors



## DUAL PURPOSE SNIPER 12-GALLON 800 PSI HARD SURFACE & CARPET EXTRACTOR



**Warranty:** Lifetime warranty on body, 2-years on vacuum motors, 1-year on pump and all electrical components, 90-days on all accessories.

- The one 2-stage and one 3-stage vacuum motors allow for 200" of water lift for efficient solution recovery that results in better extraction and faster carpet drying.
- High performance motors stay cool with an innovative air intake design that uses the vacuum's own cooling fans to pull cool, outside air over the motors, reducing motor temperature and preventing overheating. This allows for performance with less maintenance.
- Adjustable pressure pump from 100 PSI to 800 PSI providing the perfect pressure for cleaning everything from carpet to hard surfaces
- 12-gallon solution and recovery tanks allow for quick and easy fill and dump disposal, reducing downtime. Auto fill and auto dump capability allows for constant working pressure from start to finish.
- Waist-high controls prevent bending and stooping to operate the machine. Adjustments can be made standing comfortably. The controls are recessed in the machine and stay protected during use, in transit or in storage.
- 10" non-skid, non-marking wheels make stair climbing easy and do not scuff floors.
- Roto-molded polyethylene tanks withstand the toughest working environments and resist dents, chips and cracks. They have a professional look with ultimate durability.
- Equipped with a high-performance suction system, this cleaner also extracts dirt, debris, and excess moisture, leaving surfaces clean and dry.

### APPLICATIONS

A powerful and versatile portable extractor that is specifically designed for high-pressure cleaning of hard surfaces. With an adjustable 100 to 800 PSI pump, you can clean tile, concrete, carpets, and everything in between!

[Ask about 230 Volt Models.](#)

[Dual Cord Hook are standard on all 6 and 12 Gallon models.](#)



Manufactured with  
Pride in the U.S.A.



### SPECIFICATIONS

**Capacity:** 12-Gallon Solution and Recovery Tanks

**Vac Motors:** (1) 2-Stage and (1) 3-Stage  
Vacuum Motors

**Solution Pump:** 800 PSI (Adjusts down to 100 PSI)

**Water Lift:** 200"

**Volts:** 110 / 120

**CFM:** 99

**Shipping Weight:** 80-3800-DUAL PURPOSE 150 lbs.  
80-3800-H-DUAL PURPOSE 160 lbs.

### MODELS

Model	Pump	Vac Motors	In Line Heat	Cord
<b>80-3800-DUAL PURPOSE</b>	800 PSI	Single 2-Stage & Single 3-Stage	No	2
<b>80-3800-H-DUAL PURPOSE</b>	800 PSI	Dual 2-Stage	Yes	2

\*Dual Cord Units Require (2) 20 Amp Breakers

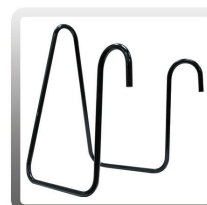
### OPTIONAL ACCESSORIES



**10-0859**  
12 in. Hard Surface  
Turbo Brush Tool



**10-0874**  
7 in. Hard Surface  
Turbo Brush Tool



**HOSE HANGER**  
Hose Hanger for  
Extractors



**80-0500**  
Hoses & Wand Kit



## SNIPER 24-GALLON FLOOD PUMPER



**Warranty:** Lifetime warranty on body, 2-years on vacuum motor, 1-year on pump and all electrical components, 90-days on tools and accessories.

- A powerful 2-stage vacuum motor and 40 GPM flow-through pump allows all waste water to be recovered at 40 gallons per minute.
- The auto pump-out feature works continuously, automatically dumping water so tanks don't have to be emptied when full. 24-gallon capacity.
- The high performance motor stays cool with an innovative air intake design that uses the vacuum's own cooling fans to pull cool, outside air over the motor, reducing motor temperature and preventing overheating.
- Waist-high controls prevent bending and stooping to operate the machine. The controls are recessed in the machine and stay protected during use, in transit or in storage.
- 10" non-skid, non-marking wheels make stair climbing easy and do not scuff floors.
- Roto-molded polyethylene body withstands the toughest working environments and resist dents, chips and cracks. Looks professional longer.
- Includes (1) 25-foot, 12/3-gauge safety power cord.
- Includes (1) 25-foot 1-1/2" vacuum hose and (1) 25-foot 1-1/2" dump hose.

### APPLICATIONS

Designed specifically for the purpose of vacuuming large amounts of water. Ideal for flood clean-up. It pumps out liquid at a rate of 40 gallons per minute.

[Ask about 230 Volt Models.](#)  
[Dual Cord Hook is standard.](#)



Manufactured with  
Pride in the U.S.A.



CREATE  
YOUR OWN  
BRAND

### SPECIFICATIONS

**Model No:** 80-6001

**Motor:** (1) 2-Stage

**Pump:** (1) 3/4 HP totally enclosed, fan cooled,  
1725 RPM Waste Dump Pump

**Pump-Out Rate:** 40.0 GPM

**Water Lift / CFM:** 110" / 120 CFM

**Air Watts / Amps:** 520 AW / 14.3 Amps

**Overflow Protection:** Automatic On/Off

**Weight:** 106 lbs.

## OPTIONAL ACCESSORIES & REPLACEMENT PARTS



**10-0029**

56 in. 2-Piece, 2-Bend  
Aluminum Wand with  
3-Piece Head Kit



**10-0170**

14 in. Squeegee Floor  
Tool



**10-0185-15-S**

15 in. Sidewinder  
Squeegee Floor Tool



**10-0488**

14 in. White Blade  
Squeegee Floor Tool



**10-0472**

14 in. Easy Glide Carpet  
and Floor Tool



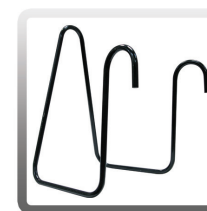
**10-0800**

Flood Pumper Pump



**10-0825-COM**

Flood Pumper Motor  
with Gasket



**HOSE HANGER**

Hose Hanger for  
Extractors

## DRAGON 12-GALLON & 6-GALLON RESTROOM CLEANER



### SPECIFICATIONS

**Model No: 80-7000**

**Solution Pump:** Adjustable 1200 PSI

**Vac Motor:** Single 3-Stage

**Vac Power:** Up to 110" Water Lift

**Power Cord:** (1) 12/3-Gauge Safety Power Cord

**Dimensions:** 27"L x 20"W x 38"H

**Weight:** 144 lbs.



Manufactured with  
Pride in the U.S.A.



### SPECIFICATIONS

**Model No: 86-7000**

**Solution Pump:** Adjustable 1200 PSI

**Vac Motor:** Single 3-Stage

**Vac Power:** Up to 110" Water Lift

**Power Cord:** (1) 12/3-Gauge Safety Power Cord

**Dimensions:** 26"L x 17"W x 35"H

**Weight:** 134 lbs.

## DRAGON 12-GALLON & 6-GALLON RESTROOM CLEANER CONTINUED

**Warranty:** Lifetime warranty on body, 2-years on vacuum motor, 1-year on 1200 PSI pump, 1-year on all electrical components, 90-days on tools and accessories.

- Powerful vacuum motors offer up to 110" water lift for efficient solution recovery that results in better extraction and faster drying.
- High performance motors stay cool with an innovative air intake design that uses the vacuum's own cooling fans to pull cool, outside air over the motors, reducing motor temperature and preventing overheating.
- Heated units include an in-line heater that lets you extract with 180 degree Fahrenheit solution!
- 6-gallon/12-gallon solution and recovery tanks allow for quick and easy fill and dump disposal, reducing downtime.
- Waist-high controls prevent bending and stooping to operate the machine. The controls are recessed in the machine and stay protected during use, in transit or in storage.
- With its powerful airflow, the blower nozzle effectively blows away dirt, dust, and debris from hard-to-reach areas such as tile grout, corners, and crevices.
- Equipped with multiple spray patterns and adjustable high/low-pressure settings, the spray gun is designed for covering large areas to a concentrated jet spray for stubborn stains and grime.
- Our vacuum suction system features a high-powered motor and advanced filtration technology, ensuring maximum suction power and efficiency.
- The scrub brush's stiff bristles penetrate deep into the pores of tile grout, effectively loosening and lifting dirt, mold, and mildew with minimal effort.
- 10" non-skid, non-marking wheels make stair climbing easy and do not scuff floors.
- Roto-molded polyethylene tanks withstand the toughest working environments and resist dents, chips and cracks.
- Includes 25-foot long safety power cord(s).
- Optional 12" Hard Surface Turbo Brush Tool and 50' Fill/Auto Dump Hose available. Order separately.

### APPLICATIONS

Designed specifically for the purpose of streamlining restroom cleaning with powerful suction, blowing, and spraying capabilities. Engineered to eliminate the need for multiple tools by combining three essential functions into one compact unit.

[Ask about 230 Volt Models.](#)



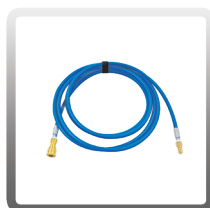
## INCLUDED ACCESSORIES



**10-3013**  
Spray Gun



**10-3022-COM**  
Blower Nozzle w/ Hose



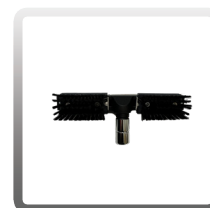
**80-8007-A**  
15 ft. Solution Hose



**10-0224**  
59" 1 pc 2 Bend



**80-0503**  
25 ft. Vacuum Hose



**10-3017-COM**  
Wheeled Squeegee



## SNIPER 6-GALLON CARPET EXTRACTORS



**Warranty:** Lifetime warranty on body, 2-years on vacuum motor(s), 1-year on 200 and 300 PSI pumps, 2-years on 100 PSI pump, 1-year on all electrical components, 90-days on tools and accessories.

- Powerful vacuum motors offer up to 205" water lift for efficient solution recovery that results in better extraction and faster carpet drying.
- High performance motors stay cool with an innovative air intake design that uses the vacuum's own cooling fans to pull cool, outside air over the motors, reducing motor temperature and preventing overheating.
- Heated units include an in-line heater that lets you extract with 180 degree Fahrenheit solution!
- 6-gallon solution and recovery tanks allow for quick and easy fill and dump disposal, reducing downtime.
- Waist-high controls prevent bending and stooping to operate the machine. The controls are recessed in the machine and stay protected during use, in transit or in storage.
- 10" non-skid, non-marking wheels make stair climbing easy and do not scuff floors.
- Roto-molded polyethylene tanks withstand the toughest working environments and resist dents, chips and cracks.
- Includes 25-foot long safety power cord(s).
- Optional 15-foot vacuum and solution hoses, single jet carpet wand and 4" stainless steel upholstery tool available. Order separately.

### APPLICATIONS

The best tool designed for deep cleaning carpet. Designed to be portable and to be used where a Truck Mount Machine cannot reach.

### SPECIFICATIONS

**Solution Pump:** 100, 200, 300, or 500 PSI

**In-Line Heated Units:** 2000 Watt, up to 200° F (Model 86-R3100-H has a 600 Watt Heater)

**Vac Motor:** Single 3-Stage, Dual 2-Stage or 3-Stage Vacuum Motors Available

**Vac Power:** Up to 205" Water Lift

**Ask about 230 Volt Models.**

**Dual Cord Hook are standard on all 6 and 12 Gallon models.**



Manufactured with  
Pride in the U.S.A.



### MODELS

Model	Pump	Vac Motors	In Line Heat	Cord	Shipping Weight
<b>86-R3100</b>	100 PSI	Single 3-Stage	No	1	72 lbs.
<b>86-R3100-H</b>	100 PSI	Single 3-Stage	Yes	1	82 lbs.
<b>86-2100</b>	100 PSI	Dual 2-Stage	No	1	78 lbs.
<b>86-2100-H</b>	100 PSI	Dual 2-Stage	Yes	2	88 lbs.
<b>86-3100</b>	100 PSI	Dual 3-Stage	No	2	82 lbs.
<b>86-3100-H</b>	100 PSI	Dual 3-Stage	Yes	2	92 lbs.
<b>86-2200</b>	200 PSI	Dual 2-Stage	No	1	87 lbs.
<b>86-2200-H</b>	200 PSI	Dual 2-Stage	Yes	2	97 lbs.
<b>86-3200</b>	200 PSI	Dual 3-Stage	No	2	93 lbs.
<b>86-3200-H</b>	200 PSI	Dual 3-Stage	Yes	2	103 lbs.

Model	Pump	Vac Motors	In Line Heat	Cord	Shipping Weight
<b>86-2300</b>	300 PSI	Dual 2-Stage	No	1	93 lbs.
<b>86-2300-H</b>	300 PSI	Dual 2-Stage	Yes	2	103 lbs.
<b>86-3300</b>	300 PSI	Dual 3-Stage	No	2	95 lbs.
<b>86-3300-H</b>	300 PSI	Dual 3-Stage	Yes	2	105 lbs.
<b>86-2500-DC</b>	500 PSI	Dual 2-Stage	No	1	96 lbs.
<b>86-2500-H-DC</b>	500 PSI	Dual 2-Stage	Yes	2	106 lbs.
<b>86-3500-DC</b>	500 PSI	Dual 3-Stage	No	2	100 lbs.
<b>86-3500-H-DC</b>	500 PSI	Dual 3-Stage	Yes	2	110 lbs.
<b>86-R3500-DC</b>	500 PSI	Single 3-Stage	No	1	77 lbs.

**NEW DC MOTORS FOR 500PSI MODELS 86-2500-DC & 86-3500-DC.**

\*Dual Cord Units Require (2) 20 Amp Breakers



## SNIPER 6-GALLON CARPET EXTRACTOR OPTIONAL ACCESSORIES



**10-0501**  
4 in. Stainless Steel  
Upholstery Tool, Required  
for Machines with Heat



**10-0923-WP**  
Jet for 4 in. Stainless Steel  
Upholstery Tool



**10-0504-WP**  
Valve for 4 in. Stainless  
Steel Upholstery Tool



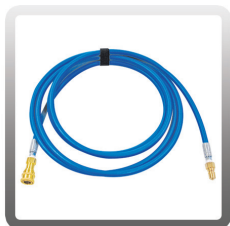
**10-0512**  
Stainless Steel Crevice  
Tool



**50-1008-A**  
Complete 15 ft. Vacuum  
Hose Assembly (1-1/4 in.)



**80-0510**  
Black Mesh Utility Bag  
(24 x 36)



**80-8007-A**  
15 ft. Solution Hose  
Assembly with  
1/4 in. Female and Male  
Quick Disconnects



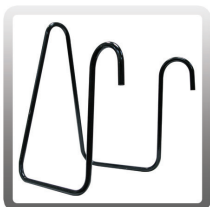
**80-8008**  
12 in. Stainless Steel  
Single Bend 1-Jet Wand



**80-8009-A**  
12 in. Stainless Steel Single  
Bend, 1-Jet Wand with 15  
ft. Vacuum and Solution  
Hoses



**80-8010**  
4 in. Stainless Steel  
Upholstery Tool with 15  
ft. Vacuum and Solution  
Hoses



**HOSE HANGER**  
Hose Hanger for  
Extractors

## SNIPER CARPET EXTRACTOR REPLACEMENT PARTS



**10-0803**  
On/Off Switch for  
Extractor



**10-0804-COM**  
6 in. Hatch Cover for  
Extractor with T-Handle  
and Gasket



**10-0805**  
Dump Valve



**10-0807**  
10 in. Wheel for Extractor

## SNIPER CARPET EXTRACTOR REPLACEMENT PARTS CONTINUED



**10-0808**  
Caster for Extractor



**10-0810-COM**  
3-Stage Extractor Motor  
with Gasket, 120 V



**10-0811-66-COM**  
2-Stage 6.6" Extractor  
Motor, 120 V



**10-0811-COM**  
2-Stage Extractor Motor  
with Gasket, 120 V



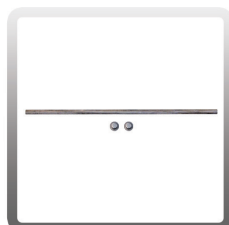
**10-0812**  
100 PSI Pump



**10-0814**  
Sensor for Heater



**10-0822**  
Intake/Exhaust Grate



**10-0836**  
19 in. Axle for Extractor  
  
**10-0820**  
End Cap for Axle



**10-0845**  
1/4 in. Strainer



**10-0860**  
25 ft. Extension Cord for  
Extractors



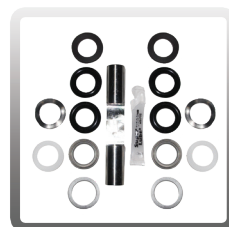
**10-0868**  
1/4 in. Female Quick  
Disconnect



**10-0869**  
200 PSI Pump



**10-0869-REG**  
200 PSI Pump Regulator



**10-0869-RA**  
200 PSI Pump Rebuild  
Kit A Plunger and Seals



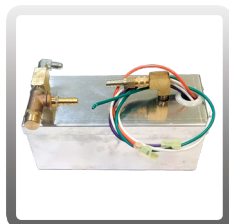
**10-0869-RB**  
200 PSI Pump Rebuild  
Kit B Valve and Seals



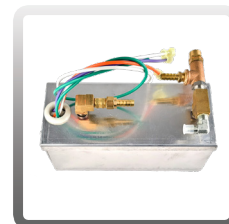
**10-0869-RC**  
200 PSI Pump Rebuild  
Kit C Bearing



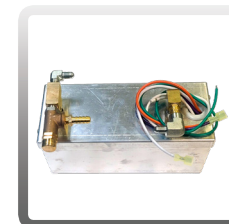
**10-0870**  
1/4 in. Male Quick  
Disconnect



**10-0910-2-1**  
2000 Watt Heater for  
100 PSI Extractor



**10-0910-2-2**  
2000 Watt Heater for  
200 PSI Extractor



**10-0910-2-3**  
2000 Watt Heater for  
300 PSI Extractor

## SNIPER CARPET EXTRACTOR REPLACEMENT PARTS CONTINUED



**10-0910-2-5**  
2000 Watt Heater for  
500 PSI Extractor



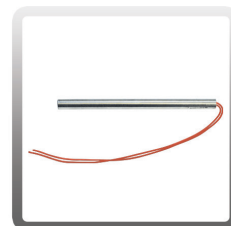
**10-0920**  
Dual Rod Heat Exchanger  
Tube for Extractor



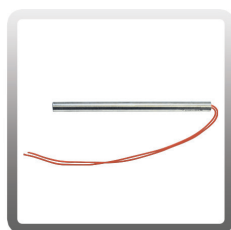
**10-1030-S2**  
2-Stage Motor Gasket



**10-1030-S3**  
3-Stage Motor Gasket



**10-1500-A**  
1000 Watt Heater  
Element



**10-1500-B**  
600 Watt Heater Element



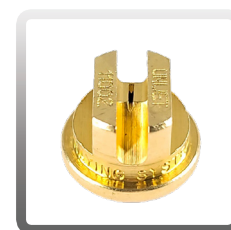
**80-0003-C**  
28" Black/Gray Hose  
Assembly with Cuffs and  
Steel-Type Inserts



**80-0007**  
#1 Tip for Dual Jet  
Extractor Wand



**80-0007-A**  
#1 Tip for a Single Jet  
Extractor Wand



**80-0007-B**  
#2 Tip for a Single Jet  
Extractor Wand



**80-0007-D**  
#3 Tip for Single and  
Dual Jet Extractor Wands



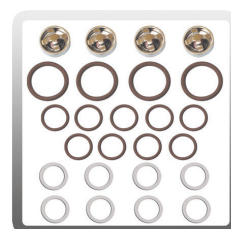
**80-0012**  
Shut-Off Assembly



**80-0016**  
500 PSI Pump



**80-0016-RA**  
500 PSI Pump Rebuild  
Kit A Plunger and Seals



**80-0016-RB**  
500 PSI Pump Rebuild  
Kit B Valve and Seals



**80-0016-RC**  
500 PSI Pump Rebuild  
Kit C Bearing



**80-0016-REG**  
500 PSI Pump Regulator



**80-0059**  
500 PSI Extractor Gauge



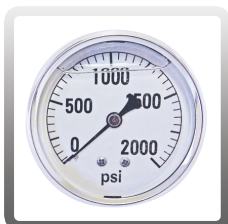
**80-0059-2**  
200 PSI Extractor Gauge



**80-0059-3**  
300 PSI Extractor Gauge



## SNIPER CARPET EXTRACTOR REPLACEMENT PARTS CONTINUED



**80-0059-4**  
1200 PSI Extractor Gauge



**80-0080**  
300 PSI Pump for  
Extractor



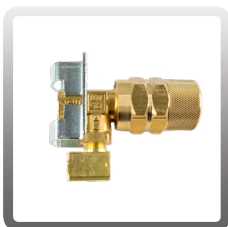
**80-0080-RA**  
300 PSI Pump Rebuild  
Kit A Plunger and Seals



**80-0080-RB**  
300 PSI Pump Rebuild  
Kit B Valve and Seals



**80-0080-RC**  
300 PSI Pump Rebuild  
Kit C Bearing



**80-0080-REG**  
300 PSI Pump Regulator



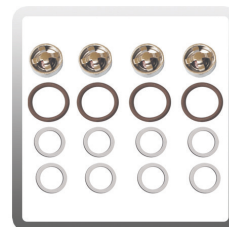
**80-0101-M**  
1/4 in. Male Brass Check  
Valve



**80-0112**  
1200 PSI Pump Kit for  
1200 PSI Extractor Only



**80-0112-RA**  
1200 PSI Pump Rebuild  
Kit A Plunger and Seals



**80-0112-RB**  
1200 PSI Pump Rebuild  
Kit B Valve and Seals



**80-0112-RC**  
1200 PSI Pump Rebuild  
Kit C Bearing



**80-0112-UN**  
1200 PSI Unloader Valve  
Regulator



**80-0505-WP**  
Valve for Single and Dual  
Jet Extractor Wands



**80-0505-A-WP**  
Valve Repair Kit for Valve  
on Single and Dual Jet  
Wands



**T-A001-1**  
Cooling Ducting



**NOTE:** We custom build machines for our clients with flexibility in model, motor and pump types. Add the auto-fill or auto-dump feature and build your machine in single or dual stack. Motors may also be built in series or parallel!



## INDY AUTOMOTIVE LINE

**Warranty:** Lifetime warranty on body, 2-years on motor and pump, 1-year on all electrical components, 90-days on tools and accessories.

- Fastest soil pick-up with high CFM airflow.
- A durable pump delivers heated extracting solution into the carpet. The powerful vacuum motors recover the spent solutions and soils.
- Waist-high controls on 6- and 12-Gallon Carpet Extractors prevent bending and stooping to operate the machine. The controls are recessed in the machine and stay protected during use, in transit or in storage.
- These heated units include an in-line heater that lets you extract with 180 degree Fahrenheit solution!
- The 3-Gallon Spot Extractor includes a black carrying-handle that slides out for easy machine transport.
- Non-skid, non-marking 10-inch wheels on 6- and 12-Gallon Extractors make stair climbing easy and do not scuff floors.
- The 3-Gallon Spot Extractor includes double ball-bearing urethane wheels for easy transport.
- All units include (1) 25-foot, 12/3-gauge safety power cord.

### APPLICATIONS

Designed specifically for detailing automobiles.

**Ask about 230 Volt Models.**

**Dual Cord Hook are standard on all 6 and 12 Gallon models.**



Manufactured with  
Pride in the U.S.A.



### 12-GALLON EXTRACTOR

**Model No: 80-4000-H**

**Capacity:** 12-Gallon

**Pump:** 100 PSI

**Vac Motor:** Single 3-Stage, 1258 Watt / 99 CFM

**Voltage:** 115 V

**Lift:** 117"

**In-Line Heater:** 1200 Watt

**Hoses:** 25-Foot Vacuum /Solution Hoses

**Upholstery Tool:** 4" Stainless Steel

**Weight:** 110 lbs.

**Dimensions:** 27"L x 20"W x 38" H



### 6-GALLON EXTRACTOR

**Model No: 86-4000-H**

**Capacity:** 6-Gallon

**Pump:** 100 PSI

**Vac Motor:** Single 3-Stage, 1258 Watt / 99 CFM

**Voltage:** 115 V

**Lift:** 117"

**In-Line Heater:** 1200 Watt

**Hoses:** 15-Foot Vacuum /Solution Hoses

**Upholstery Tool:** 4" Stainless Steel

**Weight:** 82 lbs.

**Dimensions:** 26"L x 17"W x 35" H



### 3-GALLON SPOT EXTRACTOR

**Model No: 50-7000**

**Capacity:** 3-Gallon

**Pump:** 55 PSI  
(also available with 100 PSI pump)

**Vac Motor:** Single 2-Stage, 804 Watt / 100 CFM

**Voltage:** 115 V

**Lift:** 76"

**In-Line Heater:** 600 Watt

**Hoses:** 15-Foot Vacuum /Solution Hoses

**Upholstery Tool:** 4" Stainless Steel

**Weight:** 42 lbs.

**Dimensions:** 25"L x 11"W x 29" H

## SPOT EXTRACTOR KITS

**Warranty:** Lifetime on body, 2-years on motor and pump, 1-year on all electrical components, 90-days on tools and accessories.

- The Spot Extractor offers fast, efficient spot cleaning of carpets, rugs and upholstery with 76" lift.
- Lightweight and great for small upholstery and spot cleaning jobs.
- A durable 55 PSI pump delivers extracting solution into the carpet. **100 PSI available!**
- The 2-stage Ametek 804 Watt / 100 CFM vacuum motor efficiently recovers spent solution and soils which allows for faster carpet drying.
- The 3-Gallon Spot Extractor with heat, heats extracting solution up to 180 degrees Fahrenheit with a 600 Watt in-line heater. The steel heater chassis is mounted in its own roto-molded tank and frame.
- Roto-molded polyethylene body withstands the toughest working environments and resists dents, chips and cracks.
- The 2-Gallon Spot Extractor includes two easy access ports allow for quick and easy fill and dump disposal, reducing downtime. Molded carrying-handle makes machine transport easy.
- The 3-Gallon Spot Extractor (with and without heat) includes a smooth-glide slide-out, molded carrying handle and double ball-bearing urethane wheels for easy machine transport. The recovery tank separates for clean, easy disposal of spent solution and soils.
- All models include (1) 20-Foot, 16/3-gauge safety power cord.



### 2-GALLON SPOT EXTRACTOR

**50-2000:** Spot Extractor with 7 ft. Vacuum and Internal Solution Hoses and 4" Clear View Upholstery Tool

**Shipping Weight:** 22 lbs.

**Dimensions:** 20" L x 8" W x 17" H



Choose from a **55 PSI** or **100 PSI** Pump

### 3-GALLON SPOT EXTRACTOR KITS

**50-1000:** Spot Extractor with 7 ft. Vacuum and Internal Solution Hoses and 4" Clear View Upholstery Tool

**50-1001:** Spot Extractor with 7 ft. Vacuum and Internal Solution Hoses and 4" Stainless Steel Upholstery Tool

**50-1002:** Spot Extractor Machine Only - No Hoses or Tools

**50-3000:** SUPER Spot Extractor with 7 ft. Vacuum and Solution Hoses and 4" Clear View Upholstery Tool

**50-3001:** SUPER Spot Extractor with 7 ft. Vacuum and Solution Hoses and 4" Stainless Steel Upholstery Tool

**Shipping Weight:** 30 lbs.  
(Model No. 50-1000)

**Dimensions:** 21" L x 10" W x 19" H



Kits Available with a **Stainless Steel** or **Clear View** Upholstery Tool

## APPLICATIONS

The best tool designed for cleaning small upholstery and spot cleaning jobs. Designed to be portable and to be used where larger Carpet Extractors cannot reach.

**Ask about 230 Volt Models.**



Manufactured with  
Pride in the U.S.A.



## ASK ABOUT OUR NEW SUPER SPOT EXTRACTOR!

The Super Spot Extractor includes a 2-stage super motor, that allows for 30% more water lift than our standard model. Feel the power of the Super Spot Extractor with 98.8" of water lift!



### 3-GALLON SPOT EXTRACTOR WITH HEAT

**50-4000:** Spot Extractor with Heat and 1.25" x 15 ft. Vacuum and Solution Hoses with 4" Stainless Steel Upholstery Tool

**In-Line Heater:** 600 Watt

**Shipping Weight:** 42 lbs.

**Dimensions:** 25" L x 11" W x 29" H

## SPOT EXTRACTOR OPTIONAL ACCESSORIES



### 10-0401-E

4 in. Clear View Plastic Upholstery Tool with External 7 ft. Hoses for machines **WITHOUT** Heat



### 10-0401-I

4 in. Clear View Plastic Upholstery Tool with Internal 7 ft. Hoses for machines **WITHOUT** Heat



### 10-0450

7 ft. Vacuum and Solution Hoses (Internal)



### 10-0450-A

7 ft. Vacuum and Solution Hoses (External)



### 10-0455

Stainless Steel Spotter Wand with Blue 3000 PSI Hose and #2 Jet



### 10-0500-E

4 in. Clear View Plastic Upholstery Tool for External Hoses for Machines **WITHOUT** Heat



### 10-0500-I

4 in. Clear View Plastic Upholstery Tool for Internal Hoses for Machines **WITHOUT** Heat



### 10-0501

4 in. Stainless Steel Upholstery Tool for use with External Hoses for Machines with or without Heat



### 10-0503

4 in. Stainless Steel Upholstery Tool and 7 ft. External Vacuum and Solution Hoses



### 10-0508

4 in. Stainless Steel Upholstery Tool with Clear View Head for External Hoses



### 10-0512

Stainless Steel Crevice Tool for External Hoses (for Indy Line)



### 80-8010-SP

4 in. Stainless Steel Upholstery Tool with 15 ft. External Vacuum and Solution Hoses



### 80-8011

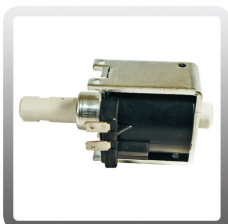
15 ft. Vacuum and Solution Hoses with 1-1/4 in. Straight Cuffs, **NO** Upholstery Tool



**NOTE:** We have the ability to vary the strength of the Spotter's heater elements, thus reducing amp draw. This is great for older buildings that require machines that pull under 15 amps.



## SPOT EXTRACTOR REPLACEMENT PARTS



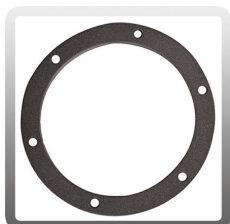
### 10-0300

55 PSI Pump for 2-Gallon and 3-Gallon Spotters



### 10-0302

5 in. Hatch Cover for 2-Gallon Solution Tank



### 10-0302-A

5 in. Gasket for Hatch Cover for 2-Gallon and 3-Gallon Spotters



### 10-0303

Rollerblade Wheel for Spotter



### 10-0304

Spotter Cap and Float Assembly for 3-Gallon Spotter

### 10-0387

Bolt for Spotter Wheel



### 10-0354-COM

3-Gallon Spotter Motor with Gasket



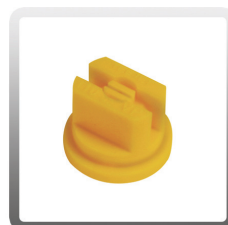
### 10-0366-SS-COM

3-Gallon Super Spotter Motor with Gasket



### 10-0447-COM

2-Gallon Spotter Motor with Gasket



### 10-0499-A

Tee Jet for 4 in. Clear View Upholstery Tool



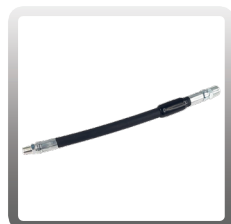
### 10-0504-WP

Valve for Stainless Steel Upholstery Tool for Part Number 10-0501



### 10-0504-A-WP

Repair Kit for 4 in. Stainless Steel Upholstery Tool Valve



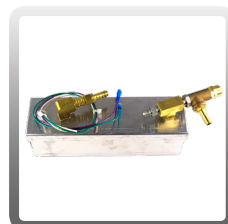
### 10-0507

8 in. Black Hose for 4 in. Stainless Steel Upholstery Tool



### 10-0900

Single Rod Heater Exchanger Tube for Spotter



### 10-0910-SP

600 Watt Heater for Spotter



### 10-0814

Sensor for Heater



### 10-1030

Spotter Motor Gasket for 2-Gallon and 3-Gallon Spotters



**NOTE:** Easy transport!  
Our clients say our Spotter is like "a suitcase on wheels."



## RAVEN 10-QUART BACKPACK VACUUMS

**Warranty:** Lifetime warranty on body, 5-years on motor and all electrical components, 90-days on tools and accessories.

- Fastest soil pick-up with high CFM airflow, making the Raven significantly more proficient than traditional uprights.
- Collects the most soils, leaving exhaust air cleaner with a disposable, heavy-duty paper micro-bag mounted inside a washable cloth shakeout bag.
- Lightweight ergonomic design, with a cushioned back-pad that fits the curve of any operator's back. The comfortable shoulder and waist belt design reduces fatigue, making work easier.
- 2 Lever-style latches lock the lid to the body and a static-dissipating vacuum hose securely threads into the backpack's lid, allowing for right- and left-handed vacuuming. The interchangeable lid converts the Raven into a powerful blower.
- Easy-to-reach On/Off power switch, quiet motor and 50-foot long safety power cord.
- 5-piece tool kit included on select models: 56" 2-piece 2-bend aluminum wand, 14" scalloped floor tool, 17" crevice tool, 5" upholstery tool and 3" dust brush.

### APPLICATIONS

Designed for vacuuming, carpet, hard floors and upholstery. Worn on the back to allow for easy and quick vacuuming while walking. Ideal for hallways, airplanes and commercial spaces.

[Ask about 230 Volt Models.](#)

**NOTE: Our backpacks double as blowers!**

Model	Type	Includes	Model	Type	Includes
<a href="#">20-1000</a>	Super	Machine Only	<a href="#">20-2003</a>	WHISPER	5-Piece Tool Kit / Power Head Kit
<a href="#">20-1001</a>	Super	5-Piece Tool Kit	<a href="#">20-3000</a>	HEPA	Machine Only
<a href="#">20-1002</a>	Super	Power Head Kit	<a href="#">20-3001</a>	HEPA	5-Piece Tool Kit
<a href="#">20-1003</a>	Super	5-Piece Tool Kit / Power Head Kit	<a href="#">20-3002</a>	HEPA	Power Head Kit
<a href="#">20-2000</a>	WHISPER	Machine Only	<a href="#">20-3003</a>	HEPA	5-Piece Tool Kit / Power Head Kit
<a href="#">20-2001</a>	WHISPER	5-Piece Tool Kit	<a href="#">20-5000</a>	Aviation	Machine Only
<a href="#">20-2002</a>	WHISPER	Power Head Kit	<a href="#">20-5001</a>	Aviation	5-Piece Tool Kit

### SUPER RAVEN

**Capacity:** 10-Quarts  
**Airflow:** 124 CFM  
**Power:** 1190 Watts  
**Air Watts:** 484 Max  
**Motor:** 1.5 HP, 1-Stage  
**dB:** 61  
**Amps:** 10.2  
**Volts:** 115 V  
**Sealed Lift:** 111.2"  
**Weight:** 13 lbs.  
**Height:** 23"

### WHISPER RAVEN

**Capacity:** 10-Quarts  
**Airflow:** 122 CFM  
**Power:** 1146 Watts  
**Air Watts:** 447 Max  
**Motor:** 1.5 HP, 2-Stage  
**dB:** 61  
**Amps:** 10.2  
**Volts:** 115 V  
**Sealed Lift:** 100.4"  
**Weight:** 13 lbs.  
**Height:** 23"

### HEPA RAVEN

**Capacity:** 10-Quarts  
**Airflow:** 124 CFM  
**Power:** 1190 Watts  
**Air Watts:** 484 Max  
**Motor:** 1.5 HP, 1-Stage  
**dB:** 61  
**Amps:** 10.2  
**Volts:** 115 V  
**Sealed Lift:** 111.2"  
**Weight:** 13 lbs.  
**Height:** 23"



### AVIATION RAVEN

**Capacity:** 10-Quarts  
**Airflow:** 124 CFM  
**Power:** 1190 Watts  
**Air Watts:** 484 Max  
**Motor:** 1.5 HP, 1-Stage  
**dB:** 61  
**Hz:** 400 Hz  
**Volts:** 115 V  
**Sealed Lift:** 111.2"  
**Weight:** 13 lbs.  
**Height:** 23"



Manufactured with  
Pride in the U.S.A.



## RAVEN 6-QUART BACKPACK VACUUMS



**Warranty:** Lifetime warranty on body, 5-years on motor and all electrical components, 90-days on tools and accessories.

- Fastest soil pick-up with high CFM airflow, making the Raven significantly more proficient than traditional uprights.
- Collects the most soils, leaving exhaust air cleaner with a disposable, heavy-duty paper micro-bag mounted inside a washable cloth shakeout bag.
- Lightweight ergonomic design, with a cushioned back-pad that fits the curve of any operator's back. The comfortable shoulder and waist belt design reduces fatigue, making work easier.
- Twist top lid with static-dissipating vacuum hose and swivel cuff for right- and left-handed vacuuming. The interchangeable lid converts the Raven into a powerful blower.
- Easy-to-reach On/Off power switch, quiet motor and 50-foot long safety power cord.
- 5-piece tool kit included on select models: 56" 2-piece 2-bend aluminum wand, 14" scalloped floor tool, 17" crevice tool, 5" upholstery tool and 3" dust brush.

### APPLICATIONS

Designed for vacuuming, carpet, hard floors and upholstery. Worn on the back to allow for easy and quick vacuuming while walking. Ideal for hallways, airplanes and commercial spaces.

**Ask about 230 Volt Models.**

Model	Type	Includes	Model	Type	Includes
<b>70-2000</b>	Super	Machine Only	<b>70-4000</b>	HEPA	Machine Only
<b>70-2001</b>	Super	5-Piece Tool Kit	<b>70-4001</b>	HEPA	5-Piece Tool Kit
<b>70-2002</b>	Super	Power Head Kit	<b>70-4002</b>	HEPA	Power Head Kit
<b>70-2003</b>	Super	5-Piece Tool Kit / Power Head Kit	<b>70-4003</b>	HEPA	5-Piece Tool Kit / Power Head Kit
<b>70-3000</b>	WHISPER	Machine Only	<b>70-5000</b>	Aviation	Machine Only
<b>70-3001</b>	WHISPER	5-Piece Tool Kit	<b>70-5001</b>	Aviation	5-Piece Tool Kit
<b>70-3002</b>	WHISPER	Power Head Kit			
<b>70-3003</b>	WHISPER	5-Piece Tool Kit / Power Head Kit			

### SUPER RAVEN

**Capacity:** 6-Quarts  
**Airflow:** 124 CFM  
**Power:** 1190 Watts  
**Air Watts:** 484 Max  
**Motor:** 1.5 HP, 1-Stage  
**dB:** 61  
**Amps:** 10.3  
**Volts:** 115 V  
**Sealed Lift:** 111.2"  
**Weight:** 12 lbs.  
**Height:** 23"

### WHISPER RAVEN

**Capacity:** 6-Quarts  
**Airflow:** 122 CFM  
**Power:** 1146 Watts  
**Air Watts:** 447 Max  
**Motor:** 1.5 HP, 2-Stage  
**dB:** 61  
**Amps:** 10.2  
**Volts:** 115 V  
**Sealed Lift:** 100.4"  
**Weight:** 12 lbs.  
**Height:** 23"

### HEPA RAVEN

**Capacity:** 6-Quarts  
**Airflow:** 124 CFM  
**Power:** 1190 Watts  
**Air Watts:** 484 Max  
**Motor:** 1.5 HP, 1-Stage  
**dB:** 61  
**Amps:** 10.3  
**Volts:** 115 V  
**Sealed Lift:** 111.2"  
**Weight:** 12 lbs.  
**Height:** 23"



### AVIATION RAVEN

**Capacity:** 6-Quarts  
**Airflow:** 124 CFM  
**Power:** 1190 Watts  
**Air Watts:** 484 Max  
**Motor:** 1.5 HP, 1-Stage  
**dB:** 61  
**Hz:** 400 Hz  
**Volts:** 115 V  
**Sealed Lift:** 111.2"  
**Weight:** 12 lbs.  
**Height:** 23"



Manufactured with  
Pride in the U.S.A.



## HIPSTER 6-QUART HIP VACS



Manufactured with  
Pride in the U.S.A.



**Warranty:** Lifetime warranty on body, 5-years on motor and all electrical components, 90-days on tools and accessories.

- Collects the most soils, leaving exhaust air cleaner with a disposable, heavy-duty paper micro-bag mounted inside a washable cloth shakeout bag.
- The innovative bag support plate keeps the bag from depleting airflow, allowing for constant power.
- A patented noise suppressing exhaust chamber makes the Hipster the quietest vacuum in its class.
- Lightweight design and four-way belt tensioner ensure maximum adjustability and comfort. The comfortable waist belt design reduces fatigue, making work easier.
- The reversible cap makes adjustment easy for both left- and right-handed use.
- Unbreakable stainless steel latches, impact-proof polyethylene body and a 1.5" industrial hose makes the Hipster durable and long-lasting.
- Includes an easy-to-reach On/Off power switch, quiet motor and 50-foot long safety power cord.
- 5-piece tool kit included on select models: 56" 2-piece 2-bend aluminum wand, 14" scalloped floor tool, 17" crevice tool, 5" upholstery tool and 3" dust brush.

### APPLICATIONS

Designed for vacuuming carpet, hard floors and upholstery. Worn on the hip to allow for easy and quick vacuuming while walking. Ideal for hallways, and commercial spaces.

[Ask about 230 Volt Models.](#)

Model	Type	Includes
<b>30-2000</b>	Super	Machine Only
<b>30-2001</b>	Super	5-Piece Tool Kit
<b>30-2002</b>	Super	Power Head Kit
<b>30-2003</b>	Super	5-Piece Tool Kit / Power Head Kit

Model	Type	Includes
<b>30-3000</b>	HEPA	Machine Only
<b>30-3001</b>	HEPA	5-Piece Tool Kit
<b>30-3002</b>	HEPA	Power Head Kit
<b>30-3003</b>	HEPA	5-Piece Tool Kit / Power Head Kit

**NOTE:** The #1 choice  
of our female clients  
based on comfort!

### SUPER HIPSTER

**Capacity:** 6-Quarts  
**Airflow:** 124 CFM  
**Power:** 1146 Watts  
**Sealed Lift:** 111.2" Max  
**Motor:** 1.5 HP, 1-Stage  
**dB:** 61  
**Amps:** 10.3  
**Volts:** 115 V  
**Weight:** 7.5 lbs.  
**Dimensions:** 11" H x 8" W

### HEPA HIPSTER

**Capacity:** 6-Quarts  
**Airflow:** 124 CFM  
**Power:** 1146 Watts  
**Sealed Lift:** 111.2" Max  
**Motor:** 1.5 HP, 1-Stage  
**dB:** 61  
**Amps:** 10.3  
**Volts:** 115 V  
**Weight:** 7.5 lbs.  
**Dimensions:** 11" H x 8" W



### HOSES

Choose from  
1-1/2" Standard or  
1-1/2" Super Flex  
Hoses



## BACKPACK AND HIP VACUUM REPLACEMENT PARTS



**10-0006**  
10-Quart Vacuum  
Micro-Lined Filter Bag  
(10 Pack)



**10-0006-HEPA**  
10-Quart Vacuum HEPA  
Micro-Lined Filter Bag  
(10 Pack)



**10-0007-6**  
6-Quart Vacuum Cloth  
Filter Bag with L-Style  
Grommet



**10-0007-10**  
10-Quart Vacuum Cloth  
Filter Bag with L-Style  
Grommet



**10-0197**  
6-Quart Vacuum Micro-  
Lined Filter Bag (10 Pack)



**10-0197-HEPA**  
6-Quart Vacuum HEPA  
Micro-Lined Filter Bag  
(10 Pack)



Cylindrical design reduces airflow as the bag bulges and sags.

**NOTE:** The 10-Quart Backpack Vacuum has a tapered versus cylindrical body. By tapering the body 3/4" per side, it prevents a bulging bag from contacting its sides, allowing airflow around the bag.

**NOTE:** The bag support plate keeps sagging heavy bags from impeding air flow. The bag does not suffocate the motor, allowing you to use 100% of the bag!

## BACKPACK AND HIP VACUUM OPTIONAL ACCESSORIES



**10-0029**  
56 in. 2-Piece, 2-Bend  
Aluminum Wand with  
3-Piece Head Kit



**10-0031**  
5 in. Upholstery Tool



**10-0032-C**  
Complete 14 in. Scalloped  
Floor Tool with Bumper



**10-0033**  
17 in. Crevice Tool



**10-0034**  
Standard 5-Piece Tool Kit



**10-0037**  
3 in. Round Dust Brush



**10-0170**  
14 in. Squeegee Floor  
Tool



**10-0163-COM**  
Power Head Kit, Includes  
Wand, Electrical Fittings  
and Vacuum Head



**10-0173**  
14 in. Felt Floor Tool



**10-0176**  
1 in. to 4 in. Overhead  
Pipe Cleaner Wand  
Attachment

## BACKPACK AND HIP VACUUM OPTIONAL ACCESSORIES CONTINUED



**10-0177**  
4 in. Car Utility Tool



**10-0181**  
28 in. Crevice Tool



**10-0183**  
14 in. Nylon Brush  
Hardwood Floor Tool



**10-0220**  
5 in. Aluminum Dust  
Brush



**10-0224**  
59 in. 1-Piece, 2-Bend  
Aluminum Wand



**10-0340**  
14 in. Scalloped Felt Floor  
Tool



**10-0342-A**  
60 in. Straight Extension  
Aluminum Wand



**10-0345**  
11 in. Crevice Tool



**10-0438**  
14 in. Slotted Horse Hair  
Carpet Brush



**10-0440**  
14 in. Quick Clean Paddle  
(for Pews and Benches)



**10-0441**  
14 in. Horse Hair  
Hardwood Floor Brush



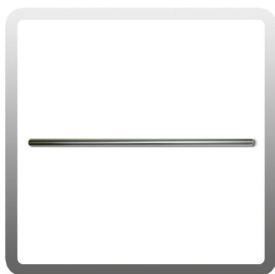
**10-2300**  
Turbo Brush Kit, Includes  
Telescopic Wand, 1-1/2 in.  
to 1-1/4 in. Hose Handle



**10-2507**  
1-1/4 in. Turbo Brush



## BACKPACK AND HIP VACUUM SIDEWINDER TOOLS



**10-0184**  
59 in. 2-Piece Sidewinder Wand

**10-0184-1**  
59 in. 1-Piece Sidewinder Wand

**10-0184-1-EXT**  
59 in. 1-Piece Sidewinder Extension  
Wand

**10-0188**  
32 in. Sidewinder Half Curve Adapter  
Pipe Cleaner Wand



**10-0185**  
18 in. Sidewinder Carpet Tool

**10-0185-15**  
15 in. Sidewinder Carpet Tool

**10-0185-8**  
8 in. Sidewinder Carpet Tool



**10-0185-F**  
18 in. Sidewinder Felt Floor Tool

**10-0185-15-F**  
15 in. Sidewinder Felt Floor Tool

**10-0185-FS**  
18 in. Sidewinder Scalloped Felt Floor  
Tool

**10-0185-15-FS**  
15 in. Sidewinder Scalloped Felt Floor  
Tool



**10-0185-H**  
18 in. Sidewinder Horsehair Floor Tool

**10-0185-15-H**  
15 in. Sidewinder Horsehair Floor Tool

**10-0185-8-H**  
8 in. Sidewinder Horsehair Dusting  
Brush



**10-0185-N**  
18 in. Sidewinder Nylon Floor Tool

**10-0185-15-N**  
15 in. Sidewinder Nylon Floor Tool



**10-0185-15-S**  
18 in. Sidewinder Squeegee Tool

## BACKPACK AND HIP VACUUM REPLACEMENT PARTS



**10-0002-A**  
Complete Vacuum Lid  
for 10-Quart Backpack  
(NO Hose)



**10-0002-B**  
Complete Vacuum Lid  
with Hose and Cuff for  
10-Quart Backpack



**10-0002-H-LID**  
Complete Hipster Lid  
with Hose and Cuff



**10-0002-6-A**  
Backpack Slip Lid with  
Latches



**10-0008-B**  
Complete Dome Filter  
with Bag Support

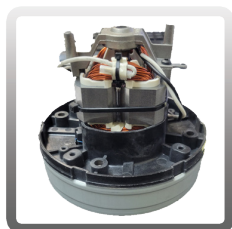


## BACKPACK AND HIP VACUUM REPLACEMENT PARTS CONTINUED



### 10-0012-COM

WHISPER 2-Stage Motor  
with Gasket



### 10-0013-HH-COM

Super 1-Stage Motor with  
Gasket



### 10-0018

Sound Dampening  
Band

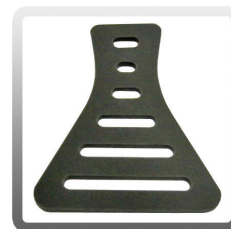


### 10-0019

10-Qt. Dual Cell Noise Filter

### 10-0019-6

6-Qt. Dual Cell Noise Filter



### 10-0020

Cushioned Back Pad



### 10-0021

Shoulder and Waist Belt



### 10-0022

Screw for Shoulder and  
Waist Belt



### 10-0023

Washer for Shoulder  
and Waist Belt



### 10-0024-COM

Complete 4 ft. Vacuum  
Hose with Cuff for 10-Quart  
(1-1/2 in. Diameter)



### 10-0024-6-COM

Complete 4 ft. Vacuum  
Hose with Cuffs for  
6-Quarts (1 Swivel and 1  
Straight)



### 10-0025

On/Off Switch for  
Backpacks



### 10-0026-A

17 in. Complete Pigtail  
Cord with Strain Relief  
Nut and Electrical  
Connectors



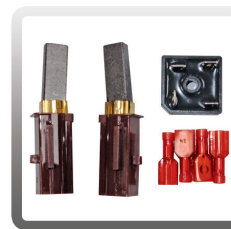
### 10-0028

50 ft. Electrical Cord with  
Lit Ends



### 10-0036

Complete 4 ft. Super Flex  
Vacuum Hose with Cuffs  
(1-1/2 in. Diameter)



### 10-0042

Aviation Backpack 400 Hz  
Motor Brush Kit (Set of 2)



### 10-0155

Straight Hose Cuff



### 10-0055-L

Long Screws for Top of  
Hipster Waist Belt



### 10-0055-S

Short Screws for Bottom  
of Hipster Waist Belt



### 10-0165

Copper Ring 3-Piece  
Head Kit



### 10-0173-A

Replacement Blades for  
14 in. Felt Floor Tool

## BACKPACK AND HIP VACUUM REPLACEMENT PARTS CONTINUED



### 10-0175-A

Replacement Brushes for  
16 in. Carpet Tool with  
Adjustable Brush



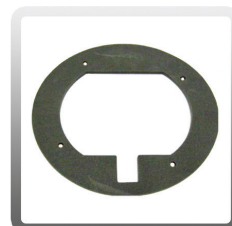
### 10-0183-A

14 in. Replacement  
Brush for Nylon Floor  
Tool



### 10-0195

Swivel Cuff (1-1/2 in.  
Diameter)



### 10-0199

Vacuum Motor Gasket



### 10-0217

Washer for Waist Belt for  
6-Quart Backpacks and  
Hipsters



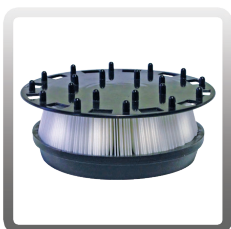
### 10-0219-H

Complete HEPA Filter  
with Bag Support for  
6-Quart HEPA Hipster



### 10-0219-6

Complete HEPA Filter  
with Bag Support for  
6-Quart HEPA Backpack



### 10-0219-10-N

Complete HEPA Filter  
with Bag Support for  
10-Quart HEPA Backpack



### 10-0223-B

3-Piece Head Kit for  
Wand



### 10-0340-A

14 in. Felt Replacement  
Blades for 14 in.  
Scalloped Felt Floor Tool



### 10-0372

Waist Belt Clip for  
Backpack Vacuum



### 10-0421

Waist Belt for 6-Quart  
Hipster



### 10-0441-A

Replacement Brushes for  
14 in. Horse Hair Brush



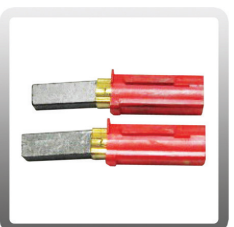
### 10-0489

White Replacement  
Blades for 14 in. Squeegee  
floor Tool (4 Pack)



### 10-1333

Black Super Motor  
Brushes, Single Stage  
(Set of 2)

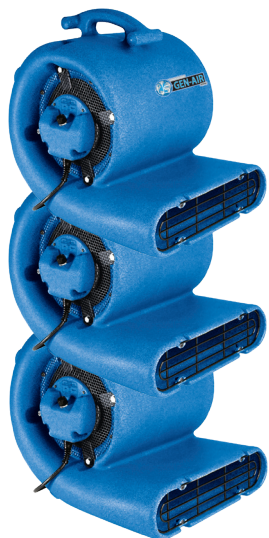


### 10-1333-O

Orange WHISPER Motor  
Brushes, 2-Stage (Set of 2)

**NOTE:** The 10-Quart Backpack Vacuum's static dissipating vacuum hose is angled into the lid at a 45 degree angle. This prevents bending and breaking. The hose also twists in and swivels, allowing for right- or left-handed vacuuming and prevents clogging.

## GEN-AIR AIR MOVER



### Stack up to 3 units for compact storage!

Handle fits conveniently into the bottom of the air mover to stack three units easily and safely.

### Operate at 3 different fan speeds!

Low - 780 RPM at 1500 CFM  
Med - 1000 RPM at 1900 CFM  
High - 1150 RPM at 2400 CFM

### Designed to operate at 3 angles!

Aim at the floor, tip back or tip up to move air and dry floors, furniture, curtains, walls and ceilings!

#### Designed to Operate at Three Angles



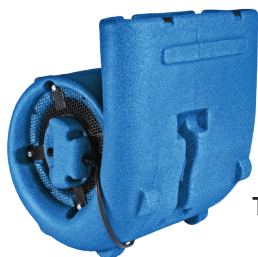
#### ① Flat

Aim at floor to move  
air or dry carpets



#### ② 45 Degrees

Tip back to dry  
curtains and walls



#### ③ 90 Degrees

Tip up to dry walls  
and ceilings

**NOTE:** Best air mover on the market with high CFM! Compare our 2400 CFM to the industry standard of 1700 CFM.

**Warranty:** Lifetime warranty on body, 1-year on motor and all electrical components.

- The 1/2 HP, 3-speed motor gives ample power for drying surfaces and moving musty air.
- Includes a 10" wide, steel fan blade and frame with a 14" chassis opening.
- Air intake and outlet screens keep airflow free from debris and protect fingers from the powerful steel fan blades.
- Designed to operate at three angles and tilts at both 45- and 90-degree angles. Aim the air stream at the floor to move air and dry carpets or tip back to dry curtains, walls and ceilings.
- Stack up to three air mover units for easier storage.
- Balanced design with molded carrying handle makes transportation easy.
- Roto-molded polyethylene body withstands the toughest working environments and resist dents, chips and cracks. It's easy to clean and always looks professional.

Includes (1) 20-foot, 16/3-gauge safety power cord.

### APPLICATIONS

Operates in three positions to allow you to dry walls, floors, ceilings and furniture with ease.

Ideal for drying furniture, drying paint, flood clean-up, moving musty air and more!

[Ask about 230 Volt Models.](#)

### SPECIFICATIONS

**Model:** 90-0000

**Motor:** 1/2 HP, 115 V

**3-Speed Fan:** 780 RPM | 1000 RPM | 1150 RPM

**Air Flow Rates:** 1500 CFM | 1900 CFM | 2400 CFM

**Body:** Molded, High-Density Polypropylene

**Weight:** 32 lbs.

**Dimensions:** 19.2" L x 14.5" W x 19.5" H

## SOLUTION TANK 40-1000 4 Gallon Solution Tank

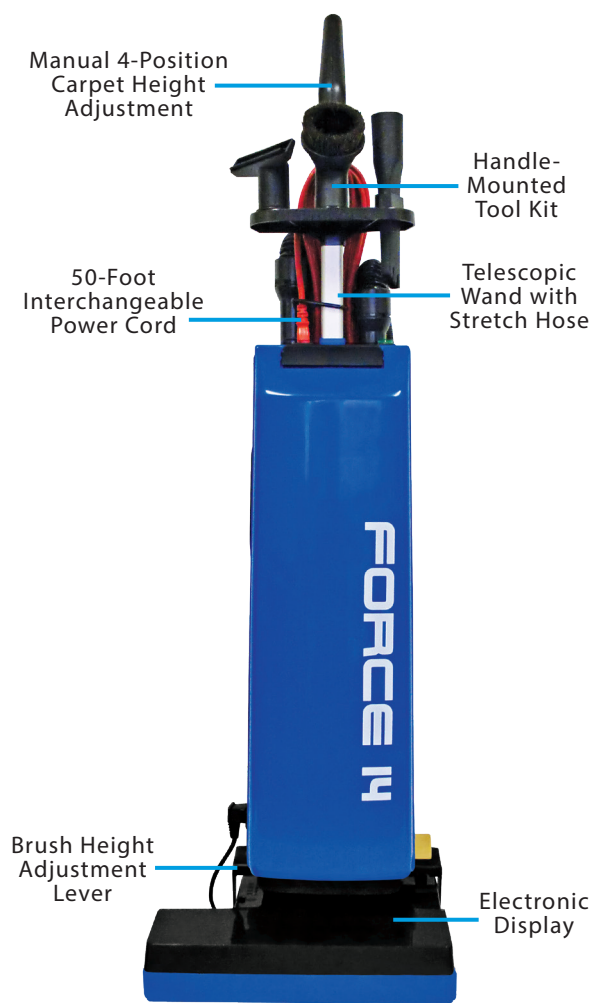
Our 4 gallon solution tank is easy to assemble and will last the life of your floor machine. Made from robust rotationally molded polyethylene, this tank is durable and can withstand extreme temperatures without cracking, leaking, or affecting the composition of the tank. A wide opening allows for spill-free filling of your favorite solution. It has a spring loaded stopper and handle that when pulled, will dispense the solution down to the floor machine and to the surface being cleaned/polished.

This tank will fit on all Mercury LoBoy, Cleanmaster, and Boss machines, plus many competitor's floor machines. The solution tank comes with a 26" x 3/8" O.D. hose, all brass fittings and the conversion kit that will allow this tank to be retrofitted to your floor machine.





## FORCE 14 Upright Vacuum



**FORCE 14**

### SPECIFICATIONS

**Model:** 60-1000

**Cleaning Path:** 14"

**Brush Speed:** 4000 RPM

**Vacuum Motor:** 12 amp / 1000 Watt

**Vacuum Air Flow:** 100CFM

**Brush Bar Drive Motor:** 1.3 amp / 145 Watt

**Furniture Guard:** Yes

**Filtration System:** Standard Filtration  
(HEPA Available)

**Sound:** 67 dB

**UL Approved:** Yes (Commercial Use)

**OSHA Compliant:** Yes

**Unit / Shipping Weight:** 19.8 lbs. / 23.8 lbs.

**Warranty:** 1-year.

- The modular design and construction of the FORCE 14 makes maintenance fast and easy.
- A powerful 12 amp motor produces 74.8" of vacuum lift, cleaning carpets in just one pass.
- A separate 1.3 amp motor spins the roller brush bar at 4000 RPM. This motor is designed with overload protection, a non-slip drive belt and an electronic sensor to detect brush bar blockage or belt breaks.
- The motor is dust protected with an in-line filter which makes this vacuum reliable and long-lasting.
- High-efficiency filtration collects the finest dust in a 4.75 quart, dual-wall micro-filtration bag.
- Manual, 4-position carpet height adjustment.
- When the vacuum handle is in the upright position at startup, or when vacuum tools are being used, the roller brush motor automatically turns off to protect the carpet.
- Its balanced center of gravity allows for a light handle weight and prevents tipping when using accessories.
- The telescopic wand with stretch hose extends up to 9-feet for easy cleaning of high, low and tight spaces.
- The polished stainless steel glide plate lets the Force 14 ride gently on the carpet.
- Non-skid, non-marking rear wheels make transport and stair climbing easy and do not scuff floors.
- Includes a handle-mounted tool kit: (1) upholstery brush; (1) dusting brush and (1) crevice tool.
- Includes (1) 50-foot interchangeable safety power cord with strain relief.

### APPLICATIONS

Designed for everyday and commercial use to sweep carpeting. Ideal for hotels, lobbies, offices and more! With a powerful 12 amp motor producing 74.8" of vacuum lift and a wide 14" cleaning path, this vacuum allows you to sweep carpets in just one pass!

### FILTERS AND BAGS



**60-0006**  
Round Filter  
Replacement



**60-0007**  
HEPA Filter  
Replacement



**60-1001**  
FORCE 14  
Replacement Paper  
Bags (10 Pack)



**60-1001-HEPA**  
FORCE 14 HEPA  
Replacement Paper  
Bags (10 Pack)

## ABOUT OUR FLOOR MACHINES

Mercury Floor Machines has been making high-quality, durable and long-lasting floor machines for over 50 years. Our machines, known as “the original floor machine,” are heavy and add a bit of elbow grease to the cleaning process. They include polished aluminum castings that we polish ourselves in-house. We are one of the few companies left that have strong, all-metal castings that are easy to clean and look newer longer! Our “Best Warranty on the Planet” Program is a key ingredient to our distributors’ ultimate success!

### FEATURES AND BENEFITS

**Warranty:** “Best Warranty on the Planet” – 5-years on motor, gearbox, transmission and chassis (unless otherwise noted).

- Powered by a precision-balanced, heavy-duty 1.5 HP 66-frame motor for easy operation.
- The triple-planetary high torque transmission handles the most demanding jobs.
- Strong, all-metal polished aluminum reinforced aprons. Easy to clean and look newer longer!
- All metal chassis gives added weight for a faster, longer lasting and brighter shine.
- Scrub with a brush 2” smaller than the machine size, or a pad and pad driver with riser 1” smaller than the machine size.
- Safety-enhanced interlock switch on the handle leaves both hands conveniently in control.
- Safety-enhanced, non-conductive dual triggers on the handle eliminate shock potential.
- 48” tall handle is fully adjustable and is comfortable for all operators.
- Non-marking, super-thick bumper protects walls and baseboards.
- Includes 6” non-marking wheels for easy transport.
- Includes (1) 50-foot, 14/3-gauge safety power cord. Motor plugs into cable at the base of the handle for easy maintenance.



Manufactured with  
Pride in the U.S.A.

[Ask about 230 Volt Models.](#)



### HERCULES Super Heavy-Duty Floor Machine

**Also called a “floor buffer” and is specifically designed for cleaning, scrubbing or stripping floors.**

**Brush Speed:** 175 RPM

**Motor Type:** 1.5 HP A/C, 2 Capacitors, 15 Amp

**Optional:** Unicorn Weight Kit (UWK) and Solution Tank (SST-4)

**All machines come with Tri-Lock Pad Driver**

The floor machine, which also may be more traditionally referred to as a “Floor Buffer,” is specifically designed for cleaning, scrubbing or stripping floors.



Model	Apron Size	Rotary Brush	Rotary Pad Driver with Riser	Weight
<b>H-13E</b>	13 in.	11 in.	12 in.	103 lbs.
<b>H-15E</b>	15 in.	13 in.	14 in.	104 lbs.
<b>H-17E</b>	17 in.	15 in.	16 in.	106 lbs.
<b>H-19E</b>	19 in.	17 in.	18 in.	107 lbs.
<b>H-20E</b>	20 in.	18 in.	19 in.	108 lbs.
<b>H-21E</b>	21 in.	18 in.	19 in.	108 lbs.

#### Optional Short Bristle Pad Drivers

**130S** 12 in. **150S** 14 in. **170S** 16 in. **190S** 18 in. **210S** 20 in.

**NOTE:** We make it easy for the end-user to self diagnose issues. Our motor plugs into the cable at the base of handle. If you unplug the short pigtail, plug it into the wall and if it doesn't work, then the issue is in the handle, not the motor!

**NOTE:** Our motors have dual capacitors that work as start and run capacitors. Our machines also include triple-planetary high torque transmissions. Both these features extend the life of the motor and the transmission!



## HERCULES SEALED SANDER with Sealed Bearing Motor

**For Dusty Wood, Stone and Concrete. Sealed motor and hospital compatible!**

**Motor Type:** 1.5 HP A/C, 2 Capacitors,  
15 Amp

**Brush Speed:** 175 RPM

**All machines come with Tri-Lock Pad Driver**

Model	Apron Size	Rotary Brush	Rotary Pad Driver with Riser	Weight
<b>H-17S</b>	17 in.	15 in.	16 in.	106 lbs.
<b>H-20S</b>	20 in.	18 in.	20 in.	108 lbs.

### Accessories

**Optional Heavy-Duty Sanding Paper Driver**

**1626** 16 in. Sand Paper Driver

**PVKIS** Dust Replacement Skirt for H-17S, for Wood Floor Sanding

**PVKISM** Dust Replacement Skirt for H-20S, for Wood Floor Sanding

**12TV027** Sanding Vacuum Kit for H-17S and H-20S



## LO-BOY Super Heavy-Duty, Ultra Quiet Floor Machine

**Used for spray buffing, scrubbing, stripping, shampooing and bonnet cleaning.**

**Motor Type:** 1.5 HP A/C, 2 Capacitors,  
15 Amp

**Brush Speed:** 175 RPM

**Optional:** Unicorn Weight Kit (UWK)  
and Solution Tank (SST-4)

**All machines come with Tri-Lock Pad Driver**

**Model L-20E** is  
known as our  
**Schoolmaster**  
and is designed  
for schools with  
a 20 in. apron.

Model	Apron Size	Rotary Brush	Rotary Pad Driver with Riser	Weight
<b>L-15E</b>	15 in.	13 in.	14 in.	96 lbs.
<b>L-17E</b>	17 in.	15 in.	16 in.	99 lbs.
<b>L-19E</b>	19 in.	17 in.	18 in.	102 lbs.
<b>L-20E</b>	20 in.	18 in.	19 in.	103 lbs.
<b>L-21E</b>	21 in.	18 in.	19 in.	105 lbs.

### Optional Short Bristle Pad Drivers

**1505** 14 in.    **1705** 16 in.    **1905** 18 in.    **2105** 19 in.



## CLEANMASTER Dual Speed Floor Machine

**Labor-saving dual speed, specifically designed for cleaning, scrubbing or stripping floors.**

**Brush Speed:** 175/300 RPM Dual Speed

**Motor Type:** 1.5 HP, 66-Frame D/C  
Rectified Motor, 13-15 Amps

**All machines come with Tri-Lock Pad Driver**

Model	Apron Size	Rotary Brush	Rotary Pad Driver with Riser	Weight
<b>TS-17</b>	17 in.	15 in.	16 in.	102 lbs.
<b>TS-19</b>	19 in.	17 in.	18 in.	103 lbs.
<b>TS-21</b>	21 in.	19 in.	20 in.	104 lbs.



Manufactured with  
Pride in the U.S.A.

### Optional High-Speed Cushioned Pad Drivers

**1709** 16 in.    **1909** 18 in.    **2109** 20 in.





## BOSS Heavy-Duty Floor Machine with Interchangeable Aprons

**Build a fleet of machines with up to five aprons. Available in single or dual speeds.**


Five interchangeable aprons with one base machine gives you a fleet of floor care machines for a range of tasks in any size facility. Aprons mount with three easy-to-change thumb screws.

May traditionally be referred to as a "Floor Buffer" and is specifically designed for cleaning, scrubbing or stripping floors (stone, carpet, tile or wood).


**Optional:** Unicorn Weight Kit (UWK) and Solution Tank (SST-4)

**A complete order includes (1) base unit with (1) or more aprons.**

Model	Brush Speed	Motor	Weight
<b>BOSS-1</b>	175 RPM	1.5 HP A/C	90 - 107 lbs. Depending on Apron Selection
<b>BOSS-2</b>	175/ 300 RPM	1.5 HP D/C	
<b>Aprons with Bumpers</b>		<b>Pad Drivers w/ Riser and 92 Clutch Plate)</b>	
<b>A-163-1</b>	13 in. (3 lbs.)	<b>1305</b>	12 in. Short Bristle
<b>A-167-1</b>	15 in. (4 lbs.)	<b>1505</b>	14 in. Short Bristle
<b>A-169-1</b>	17 in. (5 lbs.)	<b>1705</b>	16 in. Short Bristle
<b>A-171-1</b>	19 in. (6 lbs.)	<b>1905</b>	18 in. Short Bristle
<b>A-172-1</b>	21 in. (7 lbs.)	<b>2105</b>	19 in. Short Bristle



CREATING  
YOUR  
OWN  
BRAND



Manufactured with

**Brush Drive:** Universal Clutch Plate



## BOSS MULTI-TASKER Floor Machine with Solution Tank and Weight Kit

**Maintain stone, carpet, tile or wood floors. Available in single or dual speeds.**

One of our most popular floor machines. It is fully loaded with all the accessories and features needed for complete floor care.

**Includes Unicorn Weight Kit:** add up to 50 extra pounds of pressure for a comprehensive stone and marble floor restoration program.

**Includes 4-Gallon Solution Tank:** for productive wet cleaning.

**Brush Drive:** Universal Clutch Plate

**Order brushes separately.**

Model	Brush Speed	Motor	Weight
<b>BMT-175</b>	175 RPM	1.5 HP A/C	175 lbs. with all Accessories
<b>BMT-175/300</b>	175/ 300 RPM	1.5 HP D/C	

**Includes Three Interchangeable Aprons**

13", 17" and 21", non-marking aprons with full wrap bumpers. Aprons mount with three easy-to-change thumb screws.

**Includes Pad Drivers**

12", 16" and 20" pad drivers with B/92 style clutch plate (for all other brushes, order 11 in., 15 in. and 19 in. Pad Drivers with B/92 Style Clutch Plate)



Manufactured with  
Pride in the U.S.A.



**Trilock Pad Drivers** now standard with every LoBoy, Hercules, and Cleanmaster models.

## PAD DRIVERS AND BRUSHES

**Brush Construction:** Use a brush with a block diameter 2" less than your machine apron size.

**Pad Driver Construction:** Use a pad driver with block diameter 1" less than your machine apron size.



**Nylon** softens when wet. Great for gentle scrubbing, mopping and polishing.

**Polypropylene** is for general purpose scrubbing. Works well on concrete and coated floors.

**Non-scuff poly** is a finer diameter (0.015-0.018") filament used for lighter duty.

**Bassine** is a soft, natural fiber. The end of the bristle is split to build a polishing surface.

**Union mix** is a mixture of bassine and Tampico. Stiffer than Bassine.



**Soft abrasive bristle** is a 0.018" nylon filament. Used for gentle scrubbing.

**Daily abrasive bristle** is a 0.035" nylon filament. Used for daily scrubbing.

**Stripper abrasive bristle** is a 0.022" nylon. Used for aggressive scrubbing and light stripping.

**Heavy-duty stripper abrasive bristle** is a 0.050" nylon filament. Used for very aggressive scrubbing and stripping.

Call 800-983-5834 for direct assistance in choosing which of our 40 pad drivers/brushes and sizes would be best for your specific application.

## ABOUT OUR BURNISHERS

Mercury Floor Machines makes ultra high-speed burnishers in three motor speeds: 1170, 1500 and 2000 RPM. Burnishers operate at a higher speed than slower buffers and provide a quick and economical way for a business to have a clean appearance. They are able to cover large spans of area compared to buffers. This makes burnishers useful for cleaning large surfaces in businesses or even supermarkets.

### FEATURES AND BENEFITS

**Warranty:** "Best Warranty on the Planet" – 5-years on motor and chassis.

- Burnishing power with 1.5 HP, 15 Amp, D/C rectified motor that eliminates burn-outs, low voltage and startup torque problems.
- Reliable 1170, 1500 or 2000 RPM motor speeds.
- 19", 20" or 21" aprons with non-marking, full wrap bumpers protect walls and baseboards.
- Low profile drive apron easily reaches under counter coves and beds.
- Balanced chassis design provides precise pad pressure. Includes flexible pad holder with threaded pad-centering device that conforms to floor irregularities, delivering an even shine and gloss.
- All metal chassis gives added weight for a faster, longer lasting and brighter shine.
- Designed with safety in mind. The interlock switch leaves both hands conveniently in control. Safety enhanced, non-conductive dual triggers eliminate shock potential.
- 6" non-marking operating wheels and separate 4" transport wheels prevent tracking of contaminants.
- Fully adjustable 48" handle is comfortable for all operators.
- Includes (1) 50-foot, 14/3-gauge safety power cord. The motor plugs into the cable at the handle base for easy maintenance.

[Ask about 230 Volt Models.](#)

### Ultra D.C. Ultra High-Speed Burnishers

Also called a "floor polisher" and is specifically designed for high-speed polishing for a high gloss shine.

**Brush Speed:** 1170, 1500 or 2000 RPM

**Apron Sizes:** 19 in., 20 in. or 21 in.

2000 RPM models include a front caster assembly. Front leveling provides precise pad pressure for even shine and gloss.

Model	Apron Size	RPM	Weight
<b>DC-19-1170</b>	19 in.	1170	84 lbs.
<b>DC-20-1170</b>	20 in.	1170	85 lbs.
<b>DC-21-1170</b>	21 in.	1170	86 lbs.
<b>DC-19-1500</b>	19 in.	1500	84 lbs.
<b>DC-20-1500</b>	20 in.	1500	85 lbs.
<b>DC-21-1500</b>	21 in.	1500	86 lbs.
<b>DC-19-2000</b>	19 in.	2000	87 lbs.
<b>DC-20-2000</b>	20 in.	2000	88 lbs.
<b>DC-21-2000</b>	21 in.	2000	89 lbs.



Manufactured with  
Pride in the U.S.A.



CREATE  
YOUR  
OWN  
BRAND

## AIR MOVERS AND VACUUM EQUIPMENT



**90-2000 Model**

① Aim Flat

② Aim at 45°

③ Aim at 90°

Retractable Handle  
Cord Wrap  
Molded Carrying Handle  
Protective Screen  
3-Speed Switch

Urethane Wheels

**90-2000WH Model**

Mercury Floor Machines' air movers are ideal for drying carpets, furniture and paint, flood clean-up, moving musty air and more. The roto-molded polyethylene body withstands the toughest working environments and resists dents, chips and cracks. It's easy to clean and always looks professional.

### FEATURES AND BENEFITS

**Warranty:** 10-years on roto-molded body, 1-year on motor and all electrical components.

- The 1/2 HP, 3-speed motor gives ample power for drying surfaces and moving musty air.
- Includes a 9.5" wide, steel fan blade.
- Air intake and outlet screens keep airflow free from debris and protect fingers from the powerful steel fan blades.
- Includes a top-of-the-line retractable handle for single-handed use and maneuverability.
- Stack up to three air mover units for easier storage.
- Balanced design with molded carrying handle, cord wrap and double ball-bearing wheels make transportation easy.
- Includes (1) 20-foot, 16/3-gauge safety power cord.



### CORSAIR (90-2000) High-Roller (90-2000WH)

**Stack up to three air movers for easier storage!**

Designed to operate in three positions and tilts at both 45- and 90-degree angles. Aim the air stream at the floor to move air and dry carpets or tip back to dry curtains, walls and ceilings.

**Model No. 90-2000WH includes retractable handle.**

Model	Weight	Dimensions		
<b>90-2000</b>	31 lbs.	19.2" L x 14.5" W x 19.5" H		
<b>90-2000WH</b>	33 lbs.			
<b>3-Speed Fan</b>	780 RPM	950 RPM	1100 RPM	
<b>Air Flow Rates</b>	1060 CFM	1360 CFM	1500 CFM	

### SOLUTION TANK SST-4 4 Gallon Solution Tank

Our 4 gallon solution tank is easy to assemble and will last the life of your floor machine. Made from robust rotationally molded polyethylene, this tank is durable and can withstand extreme temperatures without cracking, leaking, or affecting the composition of the tank. A wide opening allows for spill-free filling of your favorite solution. It has a spring loaded stopper and handle that when pulled, will dispense the solution down to the floor machine and to the surface being cleaned/polished.

This tank will fit on all Mercury LoBoy, Cleanmaster, and Boss machines, plus many competitor's floor machines. The solution tank comes with a 26" x 3/8" O.D. hose, all brass fittings and the conversion kit that will allow this tank to be retrofitted to your floor machine.





## VACUUM EQUIPMENT



### ACE 10-Quart Backpack Vacuum

**Worn on the back to allow for easy and quick vacuuming while walking. Ideal for hallways!**

**Warranty:** 5-year warranty on body, 2-years on motor, 90-days on tools.

- Fastest soil pick-up with a 1.5 HP, 2-stage, 1122 Watt motor and 120 CFM airflow, making the ACE significantly more proficient than traditional uprights.
- Collects the most soils, leaving exhaust air cleaner with a disposable, heavy-duty paper micro-bag mounted inside a washable cloth shakeout bag.
- Lightweight ergonomic design, with a cushioned back-pad that fits the curve of any operator's back. The comfortable shoulder and waist belt design reduces fatigue, making work easier.
- Two lever-style latches lock the lid to the body and a twist top lid with static-dissipating vacuum hose and swivel cuff allow for left- and right-handed vacuuming.
- Includes easy-to-reach On/Off power switch and (1) 50-foot, 16/3-gauge safety power cord.
- Includes 5-piece tool kit: 5" upholstery tool, 3" round dust brush, 14" scalloped floor tool, 17" crevice tool and 56" 2-piece wand.



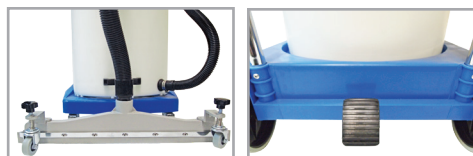
### STORM 20-Gallon Wet / Dry Vacs

**Used for both wet and dry vacuuming. Ideal for flood or spill clean-up.**

**Warranty:** 1-year warranty on motors, 90-days on tools and accessories.

- Powerful dual 1.335 HP (total 2.67 HP) / 2000 Watt vacuum motors with separate switches for each motor.
- High 225 CFM airflow and 78" water lift.
- 20-gallon tank capacity (15-gallon wet). Select chromed steel or super-durable poly tank construction.
- Weighing only 63 lbs. (empty), this lightweight wet/dry vac is steady on the floor and makes transport easy.
- Cloth vacuum filter controls dust and protects motors. Easy to remove and wash.
- Includes a 10-foot vacuum hose, strong chromed-plated steel "S" wand and durable vacuum head.
- The 1.5" vacuum hose locks securely to the tank port.
- Includes a 5-piece tool kit: crevice tool, dust brush, squeegee tool, scalloped bristle floor tool and 2-piece wand.
- Includes (1) 50-foot, 16/3-gauge safety power cord.

**Ask about 230 Volt Models.**



#### Optional Squeegee Assembly

Step-down foot pedal to raise and lower front mounted squeegee. Attaches to machine cart.

**Part No. WVS-20B**

**WVP-20**  
Poly Tank



**BF5-21-SET**  
5 -Piece Tool Kit with Wand and Hoses for Wet/Dry Vacs





ULTIMATE  
SOLUTIONS  
Together We're Better!



Ultimate Solutions Corporate Office  
15571 Container Lane, Huntington Beach, CA 92649  
Phone: 800-983-5834

## Notes



ULTIMATE  
SOLUTIONS  
Together We're Better!

**Sandia**  
PRODUCTS  
Your Ultimate Choice in  
Profitable Cleaning Performance!

Ultimate Solutions Corporate Office  
15571 Container Lane, Huntington Beach, CA 92649  
Phone: 800-983-5834

## Notes





**Sandia**  
PRODUCTS  
Your Ultimate Choice in  
Profitable Cleaning Performance!

Ultimate Solutions Corporate Office  
15571 Container Lane, Huntington Beach, CA 92649  
Phone: 800-983-5834

## Discover our Jan-San Consumables Line!



Find your Favorite Fragrance with



[www.ultimatesolutionsinc.net](http://www.ultimatesolutionsinc.net)



# STAND OUT FROM THE COMPETITION

with our Private Label Program

## BUILD YOUR THE ULTIMATE PRIVATE LABEL PROGRAM

We make it easy for you to combine your company's brand recognition, reputation and business skills with our quality products!



## PLACE YOUR LOGO ON OUR PRODUCTS

We partner with you to develop custom labels and graphics.

## CHOOSE YOUR MACHINE'S COLOR SCHEME

(6) bumper colors available and we can mold any colored machine!

## CUSTOMIZE YOUR MARKETING MATERIALS

Customized product sell sheets and operating manuals included.

## NO MINIMAL START-UP ORDERS

No minimum quantity of machines required to purchase!

