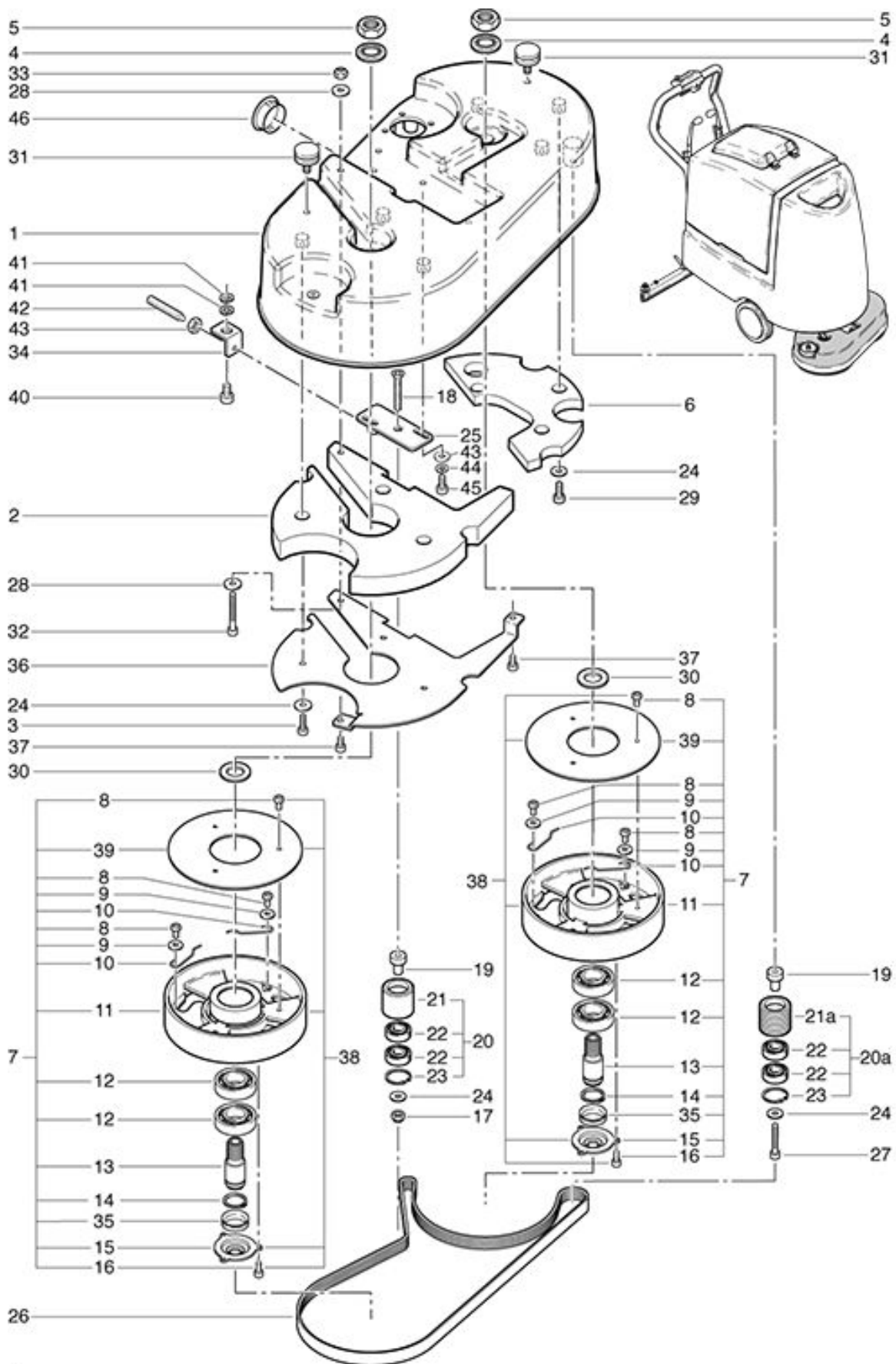


Drive unit for brush head

As at: 01/25/10 Time:22:38



Drive unit for brush head

As at: 01/25/10 Time:22:38

Pos.	Description	Reference
01	Motor housing	560.206
02	Weight	560.275
03	Hexagon screw M 6x20	P...486 P
04	Locking screw M 20	P...498 Q
05	Hexagon nut M 20x1.5	P...492 R
06	Weight beside motor	560.270
07	Brush sripe complete including items 8-16,35+39	561.210
08	Hexagon screw M 5x10	P...484 O
09	Washer M 5	P...496 H
10	Spring	560.216
11	Brush sripe	560.215
12	Ball bearing	P...316 P
13	Main axle	560.212
14	Retaining washer 24x1 DIN 471	P...513 D
15	Hub cover	560.218
16	Hexagon screw M 4x8	P...488 D
17	Stopp-nut M 6	P...492 K
18	Countersunk screw M 6x35	P...479 S
19	Bearing pin	560.256
20	Belt tension pulley compl. including Items 21-23	560.255
20a	Belt tension pulley compl. including Items 21a-23	560.254
21	Belt tension pulley	560.257
21a	Belt tension pulley	560.258
22	Ball bearing	P...315 I
23	Retaining washer DIN 472	P...513 U
24	Washer M 6	P...497 K
25	Belt tension adjuster	561.262
26		561.253
27	Hexagon screw M 6x35	P...486 S
28	Washer M 6	P...496 L
29	Hexagon screw M 6x16	P...486 R
30	Washer 20/32/0.7	6230258
31	Rubber buffer	560.286
32	Hexagon screw M 5x40	P...486 N
33	Hexagon nut M 5	P...493 G
34		561.261
35	V-profile ring VA 25	P...343
36	Weight mounting plate	560.276
37	Hexagon screw M 5x10	P...489 E
38	Brush sripe kit including items 8,11,15,16,39	561.220
39	Dirt rag	561.214
40	Hexagon screw M 8x10	P...487 A
41		P...496 AA
42	Threaded pin M 8x	P...486 FA

43 Hexagon nut M 8
44 Spring washer M 6
45 Cylindrical screw M 6x12

P...490 E
P...498 U
P...486 Q