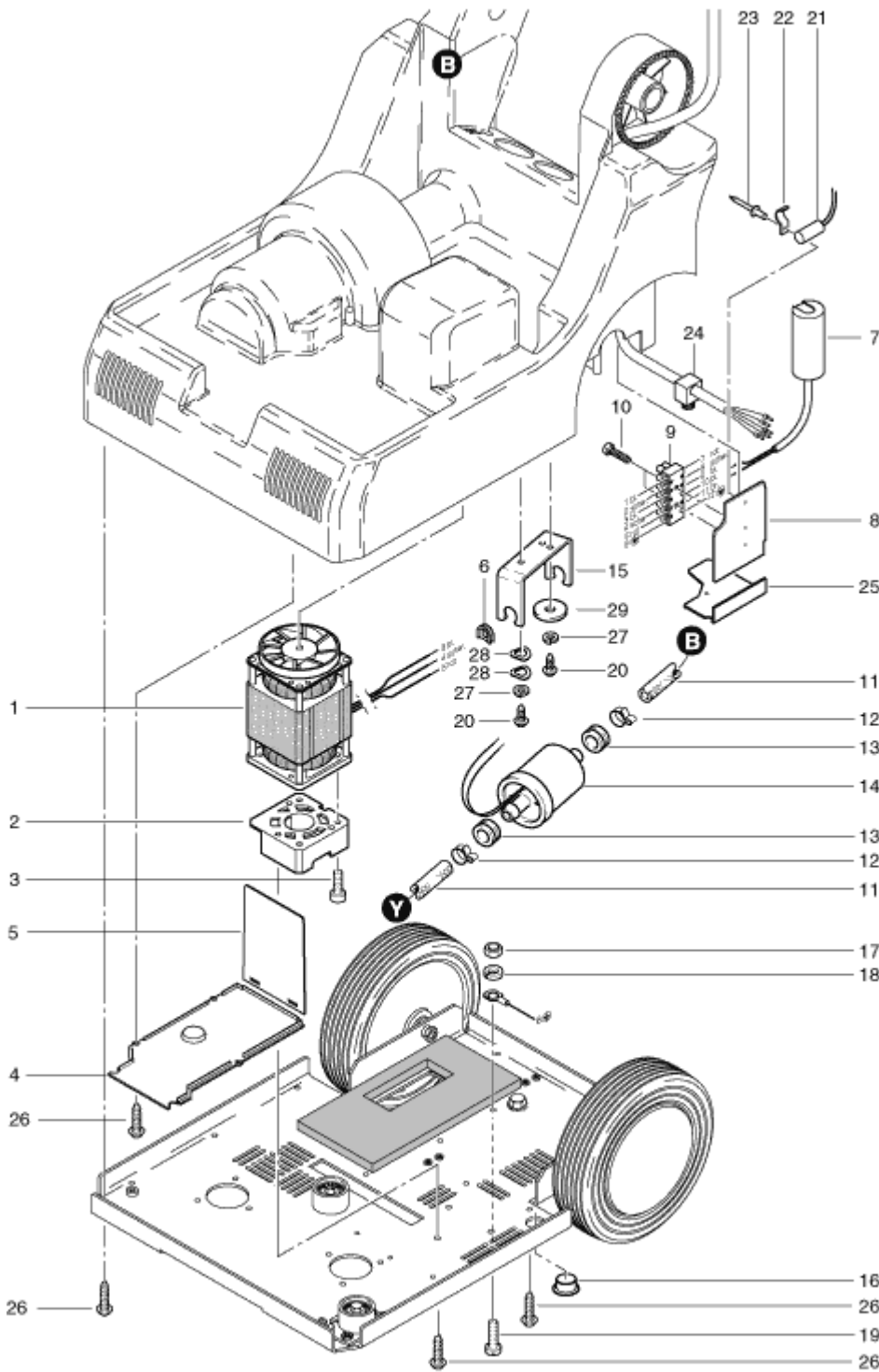


# MS-12 PUMP ASSEMBLY



Pos.	Description	Reference
01	Brush motor	300.281
01	NDS-L - pump 220-240V 50Hz	P...815
01	NDS-L - pump 24V DC	P...815 L
02	Motor fixing plate	300.357
02	Ring	P...815 H
03	PT-screw KA 40x16 mm	P...516G
03	Cover	P...815 B
04	Air canal cover	300.058
04	Counter ring	P...809 N
05	Air canal plate	300.061
05	Valve spring	P...809 P
06	Rubber clamp	P...014A
06	Valve cone	P...810 S
07	Capacitor 5uF	P...385I
07	Valve seating	P...809 Q
08	Plate for electrical terminals	380.047
08	O-ring 12x1,5 mm	P...809 L
09	Electrical terminal (6)	P...383C
09	O-ring 14x1,5 mm	P...809 K
10	Screw KA 30x14 mm	P...516S
10	Counter ring	P...815 X
11	Suction hose 12/6x530 mm	300.072
11	Piston	P...809 B
12	Hose clamp 14.5 mm	P...550A
12	Pressure spring for piston	P...809 E
13	Rubber clamp	P...207A
13	Housing pipe	P...815 D
14	NDS-L pump	P...815
14	Spring support	P...809 F
15	Pump holder	P...207B
15	Raising NDS-L	P...815 A
16	Cover	P...171N
16	Spring support compl. Including: items 8,9+14	P...810 X
17	Hexagon nut M4	P...491Q
17	Valve seating compl. Including: items 4-9	P...810 Y
18	Spring ring M4	P...498A
19	Pan head screw M 4x12 mm	P...476L
20	PT-screw KA 30x6 mm	P...515Y
21	Capacitor 0.2uF	P...387A
22	Holder for capacitor	P...109C
23	Blind rivet 3x6 mm	P...485H
24	Cable tightener	380.251
25	Cover for electrical terminals	380.048
26	PT-screw KA 40x16 mm	P...516C
27	Spring ring M4	P...498A
28	Spring ring M6	P...497W
29	Washer 6/25x1.8 mm	P...497Y