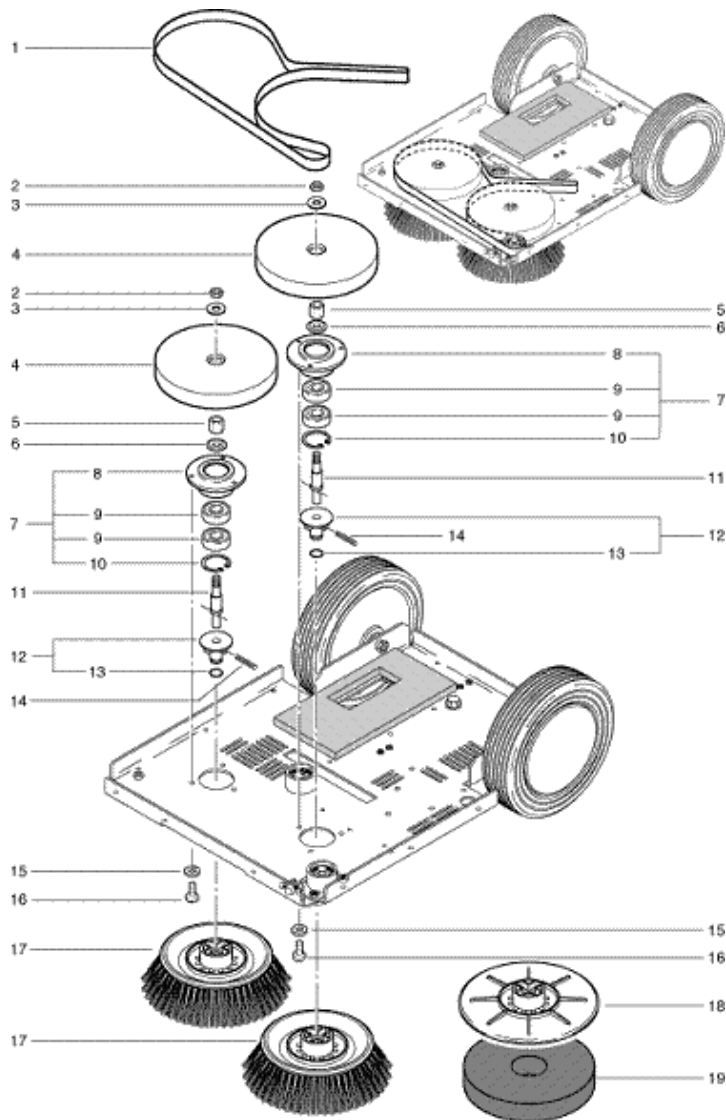


MS-12 BRUSHES



Pos.	Description	Reference
01	Belt	300.121
02	Hexagon nut M8	P...490E
03	Washer M8	P...497T
04	Wheel	300.362
05	Hub S 24x12.8 mm	300.369
06	Washer dm 22 mm	300.352
07	Bearing housing complete - including: items 8-10	300.365
08	Bearing housing complete	300.366
09	Ball bearing	P...316D
10	Retaining ring dm 32 mm	P...514K
11	Axle	300.116
12	Centering pin with o-ring	300.368
13	O-ring 9.19x2.62 mm	P...960U
14	Pin d 4x30 mm	P...512F
15	Washer M4	P...496D
16	Screw M 4x8 mm	P...481P
17	Brush dm 170 mm	300.059
18	Driving disc - dm 16.5 cm (Optional accessories)	300.070
19	Pad red - dm 16.5 cm (Optional accessories)	300.010
19	Pad brown - dm 16.5 cm (Optional accessories)	300.020