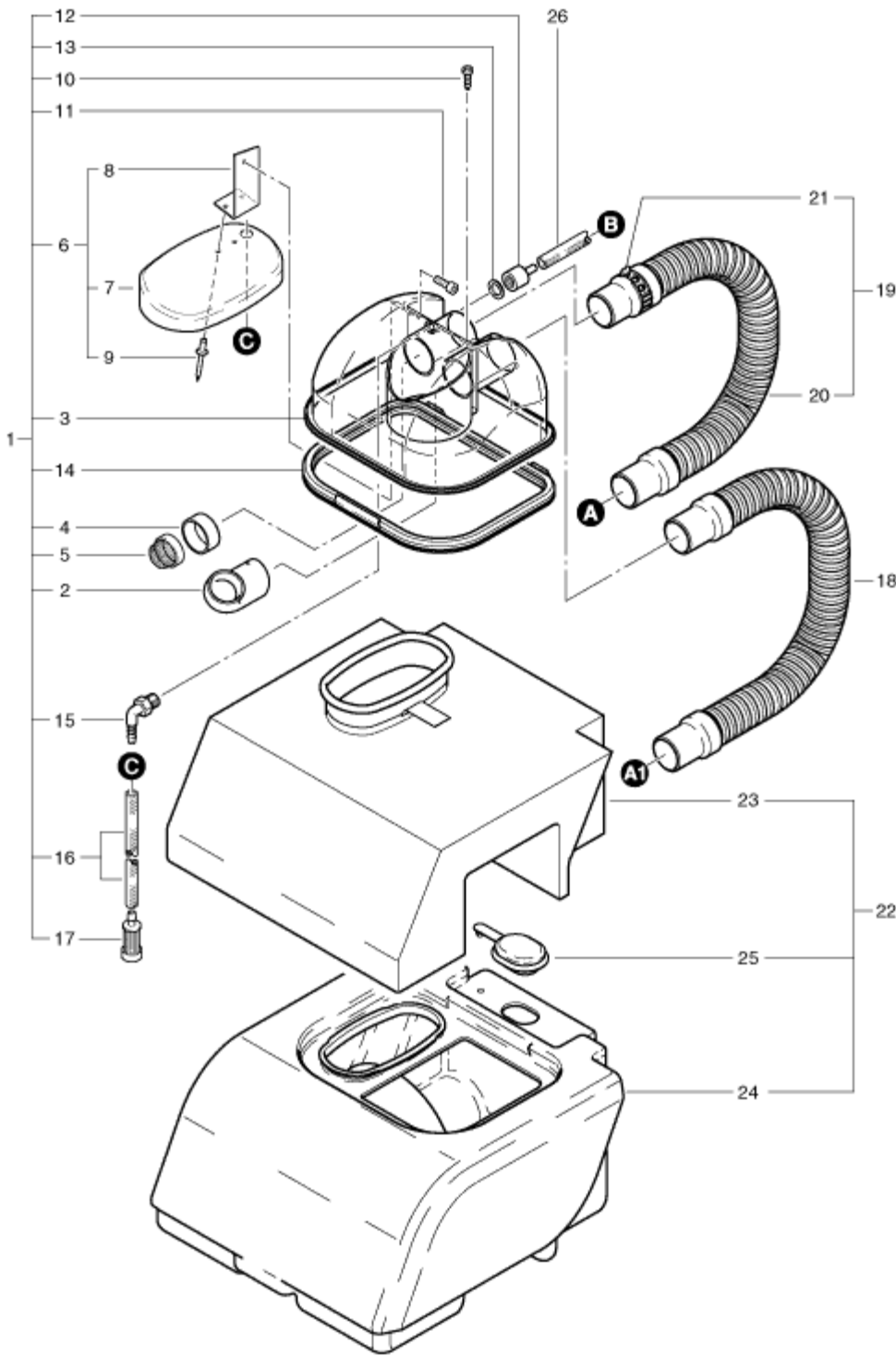


MS-12 COVER



Pos.	Description	Reference
01	Tank cover complete - including: items 2-17	300.700
02	Bent tube	380.552
03	Tank cover	380.510
04	Ring for filter	380.556
05	Filter	400.766
06	Partition complete - including: items 7-9	300.580
07	Clean water tank cover	300.584
08	Angle	300.585
09	Blind rivet dm 4x8 mm	P...485 C
10	PT screw KA 30x6	P...515 Y
11	Hexagon socket screw M 3x10	P...487 Y
12	Fitting SW22 G3/8''	380.555
13	Gasket	030.015
14	Seal for cover	380.554
15	Angled fitting G1/4''	P...541 I
16	Hose 6/12 x 250 mm	300.703
17	Fresh water filter	P...528
18	Complete hose compl.	300.743
19	Suction motor hose compl. - including: items 20+21	380.740
20	Hose	380.743
21	Air control slide	380.745
22	Tank complete - including: items 23-25	300.550
23	Fresh water tank	300.722
24	Tank	300.560
25	Cover	300.731
26	Suction hose 12/x530	300.072