

Private Label
Branding
Available!

DISCOVER THE BENEFITS OF THE LOW PROFILE AIR MOVER

Powerful high airflow dries carpets,
floors, walls and ceilings!



THE AIR PRINGLE AIR MOVER

Stackable and Super Light to Carry



Intertek



ULTIMATE SOLUTIONS
Together We're Better!

**CALL US TODAY IF YOU HAVE ANY QUESTIONS,
OR WOULD LIKE TO PLACE AN ORDER!**

Ultimate Solutions | Mercury Floor Machines
15571 Container Lane, Huntington Beach, CA 92649

Phone: 888-568-4606 | Fax: 201-568-7962

www.us-group.com | www.mercuryfloormachines.com

Another Innovative
Product from:



SEE THE BENEFITS

of the AIR PRINGLE Air Mover

Warranty: 10-year warranty on body, 1-year on motor and all electrical components.

- The 1/4 HP, 2-speed motor gives ample power for drying surfaces and moving musty air. A two-speed switch allows for low and high airflow.
- The new Low Profile machine is a radial air mover with outstanding performance, 1100 CFM and 2.1 amps, as well as many superior features, including its exceptional ergonomics and compact size.
- Designed to operate in three (3) positions: flat, raised on legs or vertical to move air and dry carpets, curtains or walls.
- GFCI and daisy chain capabilities allow five (5) units to be connected from a single outlet (includes circuit breaker and two female outlets).
- Nested stacking allows for easier storage – stack up to six (6) units! (Do not stack units while operating)
- Includes a 12.4" wide, steel fan blade and frame with a 16" chassis opening.
- Air intake and outlet screens keep airflow free from debris and act as a safety feature.
- Injection PE plastic molding withstands the toughest working environments and resist dents, chips and cracks. It's easy to clean and always looks professional.
- Balanced design with molded carrying handle and cord wrap make transportation easy. Foldable legs allow for raised air direction.
- Includes (1) 25-foot, 14/3-gauge safety power cord.

APPLICATIONS

- Ideal for drying carpets, furniture and paint, flood clean-up, moving musty air and more!

SPECIFICATIONS

Model: 90-2000-LP

Motor: 1/4 HP, 115 V

Speed: 2-Speed

Low Air Flow: 1350 RPM / 900 CFM

High Air Flow: 1600 RPM / 1100 CFM

Cycle: 60 Hz

Amps: 2.1 Amps

Safety: ETL Tested to UL/CSA Standards

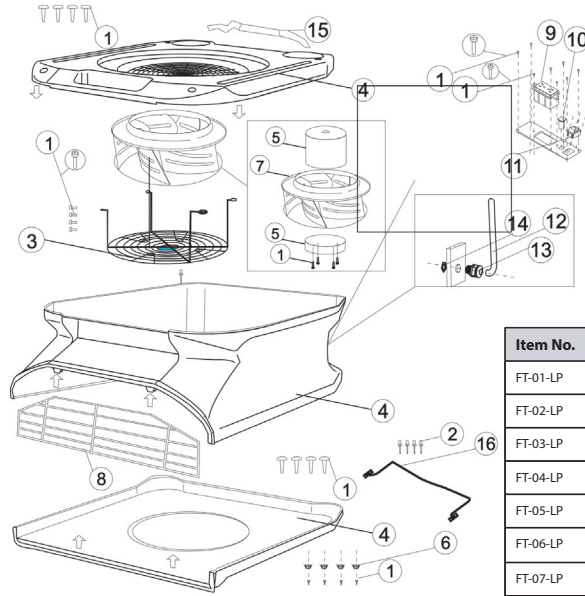
Power Cord: 25-Foot, 14/3-Gauge Safety Power Cord

Weight: 20 lbs. (21 lbs. boxed)

Dimensions: 20" L / 16" W / 9" H (22" L / 18" W / 10" H boxed)

DISCOVER THE POWER OF HAVING OPTIONS

Compare us to the competition – discover the difference!



| Item No. | Description | Qty. | No. |
|----------|--------------------|------|-----|
| FT-01-LP | Screw | 16 | 1 |
| FT-02-LP | Rivet | 4 | 2 |
| FT-03-LP | Wire Grill | 1 | 3 |
| FT-04-LP | Housing | 3 | 4 |
| FT-05-LP | AC Motor | 1 | 5 |
| FT-06-LP | Rubber Foot | 4 | 6 |
| FT-07-LP | Fan Blade | 1 | 7 |
| FT-08-LP | Outlet Grill | 1 | 8 |
| FT-09-LP | GFCI Outlet | 1 | 9 |
| FT-10-LP | Circuit Breaker | 1 | 10 |
| FT-11-LP | On/Off Switch | 1 | 11 |
| FT-12-LP | Power Cord | 1 | 12 |
| FT-13-LP | Strain Relief Plug | 1 | 13 |
| FT-14-LP | Strain Relief Nut | 1 | 14 |
| FT-15-LP | Handle | 1 | 15 |
| FT-16-LP | Kickstand | 1 | 16 |



GFCI and Daisy Chain Capabilities

Connect five (5) units from a single outlet!

Stack multiple units for compact storage!

Nested stacking allows for easier storage. Super light and easy to carry!



Designed to operate at 3 angles!

Operate flat, raised on legs or vertical to dry carpets, floors, furniture, curtains and walls.