

New Equipment Warranty

Limited Warranty

Mercury Floor Machines warrants new equipment against defects in material and workmanship under normal use and service to the original purchaser. Any statutory implied warranties, including any warranty of merchantability or fitness for a particular purpose, are expressly limited to the duration of this written warranty. Mercury Floor Machines will not be liable for any other damages, including but not limited to indirect or special consequential damages arising out of or in connection with the furnishing, performance, use or inability to use the machine. This remedy shall be the exclusive remedy of the purchaser. The warranty period is subject to the conditions stated below.

10-Year Warranty on Body, 1-Year on Motor and all Electrical Components

Mercury Floor Machines warrants the plastic chassis to be free of defects in materials and workmanship for one (1) year. Mercury Floor Machines warrants the 1/4 HP electric motor to be free of defects in materials and workmanship for one (1) year, under normal use and service sold to the original purchaser. Parts replaced or repaired under this warranty are warranted for the remainder of the original warranty period. Service labor charges are covered for one (1) year from the date of purchase, when performed by a Mercury-authorized service provider. Freight charges to and from this service provider will be covered for ninety (90) days from the purchase date. After this ninety (90) day period, these freight charges will be paid by the equipment owner. Travel expenses are not covered.

Normal wear items such as capacitors, cords, finishes or switches will be warranted for manufacturing defects for ninety (90) days from the purchase date.

All warranties of motors and associated components will be voided: if the machine is serviced by anyone other than a Mercury-authorized service provider; if the machine is mechanically modified; or if the machine is misused or abused.

The warranty starts on the purchase date by the original purchaser from an authorized Mercury Floor Machines distributor, subject to proof of purchase. The machine registration card must be completed and returned immediately at the time of purchase. If proof of purchase cannot be identified, the warranty start date is ninety (90) days after the date of sale to an authorized Mercury Floor Machines distributor.



Ultimate Solutions Corporate Office
15571 Container Lane, Huntington Beach, CA 92649
Phone: 888-568-4606 | Fax: 714-901-8404
www.mercuryfloormachines.com

Make a copy of this card for future reference.

Copyright © 2018 Ultimate Solutions | Mercury Floor Machines. All Rights Reserved.

SAFETY, OPERATION AND MAINTENANCE MANUAL WITH PARTS LIST

Please read before use!

2-SPEED, 1/4 HP MOTOR

ACTIVATE
YOUR
WARRANTY!



Model: 90-2000-LP



**ULTIMATE
SOLUTIONS**
Together We're Better!

IMPORTANT INFORMATION AND SAFETY INSTRUCTIONS

Register your Machine Online or Return your Machine Warranty Card!
Serial No: _____

THE AIR PRINGLE AIR MOVER
Stackable and Super Light to Carry

Another Innovative
Product from





Dear Valued Client,

Congratulations on the purchase of your Air Pringle Air Mover! The world of industrial cleaning is becoming more high-tech and competitive and we strive to provide you with the most innovative products. Our Air Mover is yet another example of this, with its cutting-edge features, quality and value.

Please review this manual paying careful attention to the Safety Instructions section. Keep in mind that any unnecessary damage, neglect or abuse of this machine will void your warranty. You can be confident that simple maintenance will ensure that your Air Mover provides quality performance for many years to come.

If warranty questions arise, please consult your manual or contact your distributor. Should you have any questions regarding maintenance, replacing parts or ordering parts, please call an authorized distributor.

Before you begin using your Air Mover, thoroughly review the Owner's Manual.

Again, congratulations on the purchase of your Air Pringle Air Mover!

Questions or Comments?

Phone: 201-568-4606

Toll Free: 888-568-4606

Fax: 201-568-7962

Ultimate Solutions Corporate Offices:

15571 Container Lane, Huntington Beach, CA 92649

Visit our website at: www.mercuryfloormachines.com

Register your machine online at: www.mercuryfloormachines.com/registration.aspx



WARRANTY REGISTRATION

Please take a moment to register your machine. Fill out the information below and mail back to Mercury immediately.

The warranty starts on the purchase date by the original purchaser subject to proof of purchase. This Machine Registration Card must be completed and returned immediately at the time of purchase. If proof of purchase cannot be identified, the warranty start date is ninety (90) days after the inventory stocking date at the distributor's warehouse.

Your machine may also be registered online at:

www.mercuryfloormachines.com/registration.aspx

Machine Model _____ Purchase Date _____

Motor Type _____ Serial No. _____

Place of Purchase _____

Shipped To _____

Your Name _____ Phone _____

E-mail _____ Fax _____

Address Line 1 _____

Address Line 2 _____

City _____ State _____ Zip _____

Comments:

Mail to:

Mercury Floor Machines
110 South Van Brunt Street
Englewood, NJ 07631

**See reverse side for Warranty Information.
Make a copy of this card for future reference.**

Copyright © 2018 Ultimate Solutions | Mercury Floor Machines. All Rights Reserved.

THE AIR PRINGLE AIR MOVER

By Ultimate Solutions | Mercury Floor Machines

Please fill out the following information:

Model No: _____

Serial No: _____

Distributor Name: _____

Distributor Phone No: _____

Date of Purchase: _____



The Ultimate Solutions Group
Our Family of Companies
TOGETHER WE'RE BETTER!

Sandia
PRODUCTS

Your Ultimate Choice in
Profitable Cleaning Performance!

Ultimate Carpet Solutions
www.sandioplastics.com



Ultimate Hard Floor Solutions
www.mercuryfloormachines.com



Ultimate Cleaning Solutions
www.ultimatesolutionsinc.net



Table of Contents

New Equipment Warranty	4
Returned Material Authorization (RMA) Procedure	5
1.0 Safety Instructions	6
2.0 Machine Schematic Drawing and Parts List	8
3.0 Grounding Instructions	10
4.0 Operating Instructions	11
5.0 GFCI and Daisy Chain Capability	11
6.0 Storing the Air Mover	11
7.0 Troubleshooting Guide	12

New Equipment Warranty

10-year warranty on body, 1-year on motor, all electrical parts and service labor.

Warranty Policy

All equipment is inspected and tested before shipping from the manufacturer. All parts are warranted to be new and free from defects in workmanship and material, under normal use to the original retail purchaser. This warranty limits manufacturer's liability for defects in workmanship or materials to replacement of defective parts only. Manufacturer accepts no liability for incidental or consequential damages arisen from the use of any equipment, defective or not. This warranty is in lieu of all expressed or implied warranties and is extended only to the original retail purchaser. Manufacturer sales and service representatives are not authorized to waive or alter the terms of this warranty, or to increase the obligations of the manufacturer under the warranty. Parts replaced or repaired under this warrant are warranted for the remainder of the original warranty period.

Freight charges to and from the service provider shall be covered for ninety (90) days from the purchase date. After the ninety (90) day period, these freight charges shall be paid by the equipment owner, subject to manufacturer discretion. Certain circumstances may require additional consideration. No travel charges shall be covered after ninety (90) days.

Manufacturer covers up to 1-year (365 days) of service labor at manufacturer's calculated hourly labor rate/repair time when performed by a manufacturer's authorized-service provider. Ultimately, labor reimbursement costs are at the discretion of the manufacturer. After 1-year, original retail purchaser is responsible for all labor costs with no manufacturer reimbursement.

Manufacturer charges a 25% restocking fee for any items that are being returned to stock. Items must be new, unused and free of damage. Only good for up to 30-days. After 30-days, manufacturer does not accept the return of any item(s) for a reimbursed price.

Authorized warranty replacement parts need to come directly from the manufacturer. Any use of any other parts will void warranty. Mercury Floor Machines does not reimburse for parts used by the customer that were not supplied directly for the machine under warranty.



NOTES:

7.0 Troubleshooting Guide

Never operate this air mover when the equipment is not performing as expected or when any part is visibly damaged. When repair is needed, take the equipment to an authorized service center.

Air Mover will not run

- Circuit breaker tripped in building. *Check and reset.*
- Equipment unplugged. *Check plug at wall and plug in.*
- Power cord failure. *Seek authorized repair services.*
- Motor sparks or smokes. *Seek authorized repair services.*

High vibration

- Air Mover fan blades are damaged or broken. *Seek authorized repair services.*
- Motor bearings are worn. *Unplug the air mover and spin the fan blades. If the spinning causes noise or restricted movement, replace the air mover with new equipment.*

Problem	Possible Cause	Remedy
Unit will not Run	<div><div>1.</div><div>No power to the unit.</div><div>2.</div><div>Switch not on.</div><div>3.</div><div>Switch is faulty.</div><div>4.</div><div>Faulty / broken cord or motor wire.</div></div>	<div><div>1.</div><div>Plug unit in. Check circuit breaker.</div><div>2.</div><div>Place in "ON" position.</div><div>3.</div><div>Replace switch.</div><div>4.</div><div>Perform continuity check, using volt / amp meter. Repair / replace faulty broken wire.</div></div>
Unit Runs but the Air Mover makes a Loud Scraping Noise	<div><div>1.</div><div>Unit has been severely jolted causing blower wheel to rub against housing.</div><div>2.</div><div>Unit has been severely jolting causing housing to deform.</div></div>	<div><div>1.</div><div>Remove motor and replace damaged motor mounts.</div><div>2.</div><div>Replace blower wheel.</div></div>
Unit Runs but Vibrates Excessively	<div><div>1.</div><div>Severe jolt has bent motor shaft causing unit to be out of balance.</div><div>2.</div><div>Air mover blade damaged.</div><div>3.</div><div>Dirt build-up on one of side of the air mover blade.</div></div>	<div><div>1.</div><div>Remove and replace motor.</div><div>2.</div><div>Replace blade if necessary.</div><div>3.</div><div>Clean air mover blade.</div></div>
Unit Runs but Blower Wheel will not Turn	<div><div>1.</div><div>Motor bearings are failing or motor has developed an internal electrical fault.</div><div>2.</div><div>Intake grill and / or exhaust grill is obstructed.</div><div>3.</div><div>Excessive duct length.</div></div>	<div><div>1.</div><div>Replace motor.</div><div>2.</div><div>Remove obstruction.</div><div>3.</div><div>Reduce duct length to recommended maximum.</div></div>

Returned Material Authorization (RMA) Procedure

Original purchaser must contact the manufacturer to follow correct RMA/warranty procedures. Must include a copy of RMA Sheet enclosed in the box with returned item. No returns shall be authorized unless the proper RMA procedures are followed. It is the responsibility of the distributor to repair the customer’s equipment as soon as possible. If the distributor does not have the facilities to repair the equipment, it may be shipped or taken to an authorized service center for repair.

Customer must contact the manufacturer prior to working on or changing out any parts, etc. Manufacturer must issue an RMA Sheet containing approved labor time and replacement parts. Do not send parts or equipment back to manufacturer without an RMA Number and approval. No labor will be paid for, nor part costs paid for or reimbursed that have not been previously approved by manufacture. All warranty work must be approved and authorized to qualify and appropriate warranty procedures must be followed.

1.0 Safety Instructions

READ THIS MANUAL BEFORE OPERATING. KNOW THE PROPER OPERATION, CORRECT APPLICATIONS AND THE LIMITATIONS OF THIS EQUIPMENT **BEFORE** USE.

This air mover will provide you many years of trouble free operating satisfaction, provided it is given the proper care. All parts have passed rigid quality control standards prior to being assembled to produce the finished product. Prior to packaging, your air mover was again inspected for assurance of flawless assembly.

This air mover is protectively packed to prevent damage in shipment. We recommend that upon delivery, unpack the unit and inspect it for any possible damage. Only a visual inspection will reveal damage that may have occurred.

If damage is discovered, immediately notify the transportation company that delivered your air mover. As a shipper, we are unable to report any claim for damage. You must originate any claim within five (5) days.

This manual is for your protection and information. Please read carefully since failure to follow precautions could result in discomfort or injury.

Reduce the Risk of Fire, Electric Shock or Injury

DO NOT USE ON WET SURFACES. DO NOT EXPOSE TO RAIN. STORE INDOORS.

- This air mover is designed for commercial use. It is constructed for indoor use and its not intended for any other use.
- Use only as described in this safety manual. Use only manufacturer's recommended replacement parts.
- DO NOT use this air mover unless trained.
- Keep hair, loose clothing, fingers, and all body parts away from openings and moving parts.
- This air mover must be connected to a properly grounded outlet only (see grounding instructions).
- This is not a toy. Close attention is necessary when used around or near children.
- DO NOT use air mover if it not operating properly. Report problems to your distributor.
- DO NOT use this air mover with damaged cord or plug. If the air mover is not working as it should, because it has been dropped, damaged, left outdoors or dropped into water, contact an authorized service center or factory.
- DO NOT use in flammable or explosive areas. Never operate this air mover near flammable or explosive dusts, liquids or vapors.
- DO NOT use outdoors. Do not expose to rain. DO NOT use in standing water. DO NOT use where oxygen or anesthetics are used.

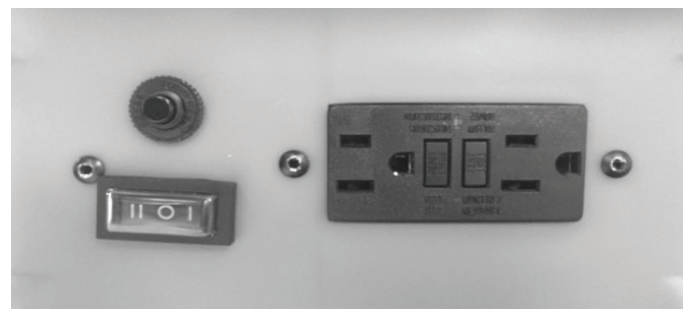
4.0 Operating Instructions

- For indoor use only.
- Adjust the air mover to the desired position for operation by using flat, raised on legs or vertical. The balanced machine design assures stable positioning.
- Plug the power cord into a grounded outlet.
- This air mover has a two-speed power setting controlled at the side of the machine for low or high airflow. Press the switch on the back of the air mover to the desired speed.
- Never pull on the cord to disconnect or turn off the motor.

5.0 GFCI and Daisy Chain Capability

GFCI and daisy chain capabilities allow five (5) units to be connected from a single outlet (includes circuit breaker and two female outlets).

6.0 Storing the Air Mover



- Wind the cord around the air mover body.
- Store in a flat position in a dry area.
- Nested stacking allows for easier storage. Stack only up to six (6) units.
- Check and clean after each operation. Remove soil and chemical buildup. Use air mover and soft brush to remove soils from motor vents and fan blades.
- Wipe the outside chassis with a mild cleaner. Never wash the outside of the air mover with flowing water. Make sure that the air intakes are not blocked.
- Check switches for proper operation. Call a trained electrician to repair or replace damaged cords and plugs.
- Report problems and repair promptly.

3.0 Grounding Instructions

DANGER: IMPROPER GROUNDING METHOD CAN RESULT IN A RISK OF ELECTRIC SHOCK.

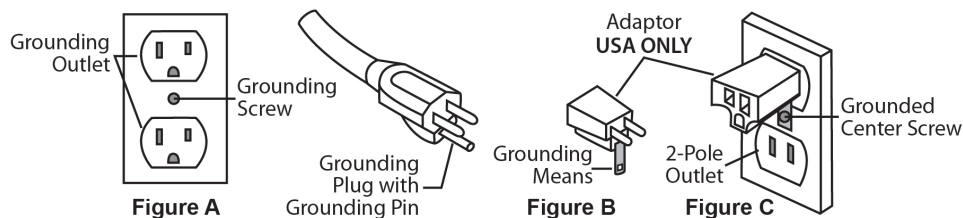
Electrical equipment must be grounded. If it should malfunction or breakdown, grounding provides a path of least resistance for electrical current to reduce the risk of electric shock. The air mover is equipped with a cord containing a grounding conductor and grounding plug. The plug must be inserted into an appropriate outlet that is properly installed and grounded in accordance with all local codes and ordinances.

If repair or replacement of the cord or plug is necessary, **DO NOT** connect the grounded wire to a flat bed terminal. The wire with insulation having an outer surface that is green with or without yellow stripes is the grounding wire.

Grounding Method

This air mover operates on a 15 amp nominal 115 V, 60 Hz, A.C. power circuit. The amp, hertz and voltage ratings are listed on the motor spec label found on each air mover. Using voltages above or below those indicated on the spec label will damage the motor. Always check your local voltage requirements.

It has a grounded plug that looks like the plug illustrated in (Fig A). A temporary adapter that looks like the adapter illustrated in (Fig B and C) may be used to connect this plug into a 2-pole receptacle as shown in (Fig B) if a properly grounded outlet is not available.



WARNING:

Improper connection of the equipment grounding conductor can result in a risk of electric shock. Check with a qualified electrician or service person if you are in doubt as to whether the outlet is properly grounded. **DO NOT** modify the plug provided with the equipment. If it will not fit into the outlet, have a proper outlet installed by a qualified electrician.

NOTE: In Canada, the use of a temporary adapter is not permitted by the Canadian Electrical Code.

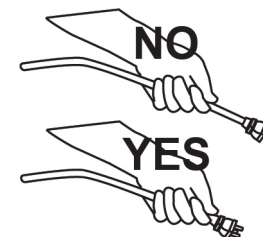
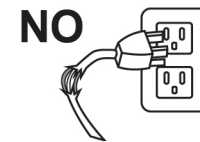
Extension Cords are Not Recommended

The air mover is built with a 25-foot, 14/3-gauge safety power cord. Use of any extension cords is **NOT RECOMMENDED**.

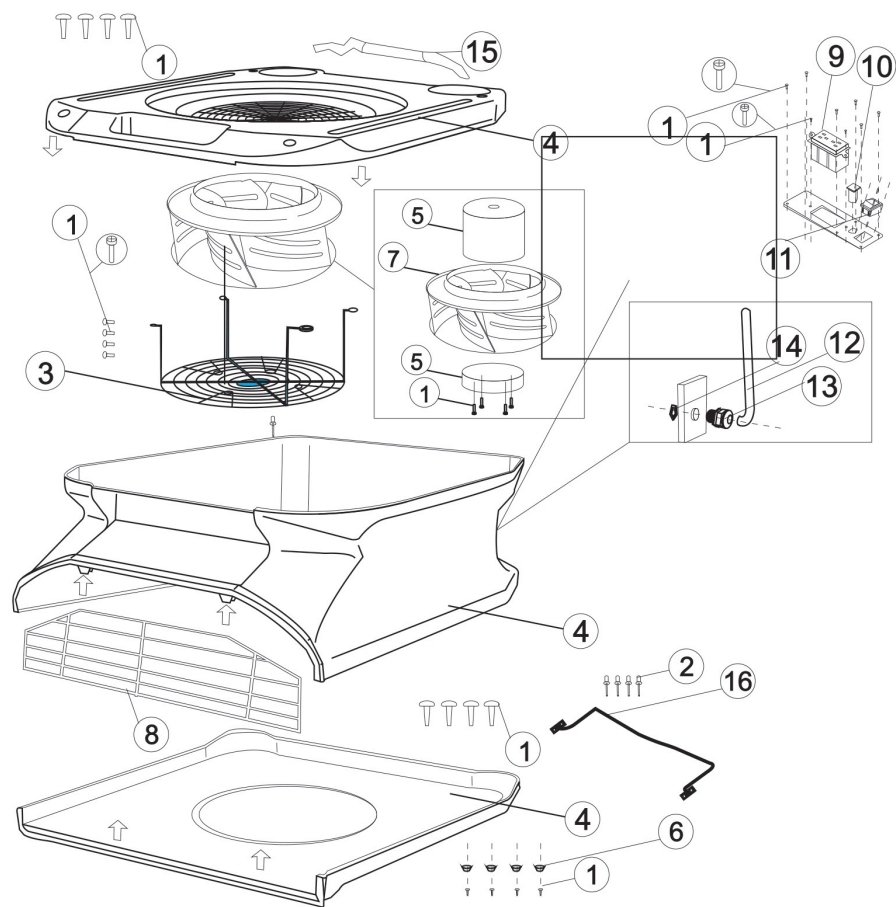
1.0 Safety Instructions Continued

- **DO NOT** allow air mover intake to collect burning or smoking debris, such as cigarettes, matches or hot ashes. **DO NOT** move air with flammable or explosive chemicals.
- **DO NOT** put objects into openings. **DO NOT** use with any opening blocked. Keep free of dust, lint, hair and anything that may reduce air flow.
- Keep the air intake free of debris. **DO NOT** operate with the intake covered or blocked.
- To avoid electric shock, **DO NOT** expose to rain. Store indoors. **DO NOT** use on wet surfaces.
- Wipe the chassis of the air mover to clean. Use air mover to remove dusts from fan blades. **DO NOT** wash with flowing water.
- Turn off all controls before unplugging. Make sure the on/off switch is in the off position.
- **DO NOT** leave the air mover when plugged in. Unplug from the outlet when not in use and before servicing.
- **DO NOT** pull or carry by the cord, use cord as a handle, close a door on the cord, or pull the cord around sharp edges or corners. Keep cord away from heated surfaces.
- **DO NOT** unplug the air mover by pulling the cord. To unplug, grasp the plug, not the cord.
- **DO NOT** handle the plug of the air mover with wet hands.
- Keep cords away from hot surfaces.
- Turn off all controls before unplugging. Make sure the on/off switch is in the off position.
- Replace damaged or worn parts immediately with genuine, original equipment parts to maintain safety and to protect your limited warranty.
- **DO NOT** lubricate the motor.
- **DO NOT** overstretch the safety power cord between the air mover and the electrical outlet in the wall.

CAUTION: **DO NOT** operate while stacked flat on top of another air mover.



2.0 Machine Schematic Drawing and Parts List



Item No.	Item Description	Qty.	Drawing No.
FT-01-LP	Screw	16	1
FT-02-LP	Rivet	4	2
FT-03-LP	Wire Grill	1	3
FT-04-LP	Housing	3	4
FT-05-LP	AC Motor	1	5
FT-06-LP	Rubber Foot	4	6
FT-07-LP	Fan Blade	1	7
FT-08-LP	Outlet Grill	1	8
FT-09-LP	GFCI Outlet - Female Plug	1	9
FT-10-LP	Circuit Breaker	1	10
FT-11-LP	On/Off Rocker Switch - BLK	1	11
FT-12-LP	Power Cord	1	12
FT-13-LP	Strain Relief Plug	1	13
FT-14-LP	Strain Relief Hex Nut	1	14
FT-15-LP	Handle	1	15
FT-16-LP	Kickstand	1	16