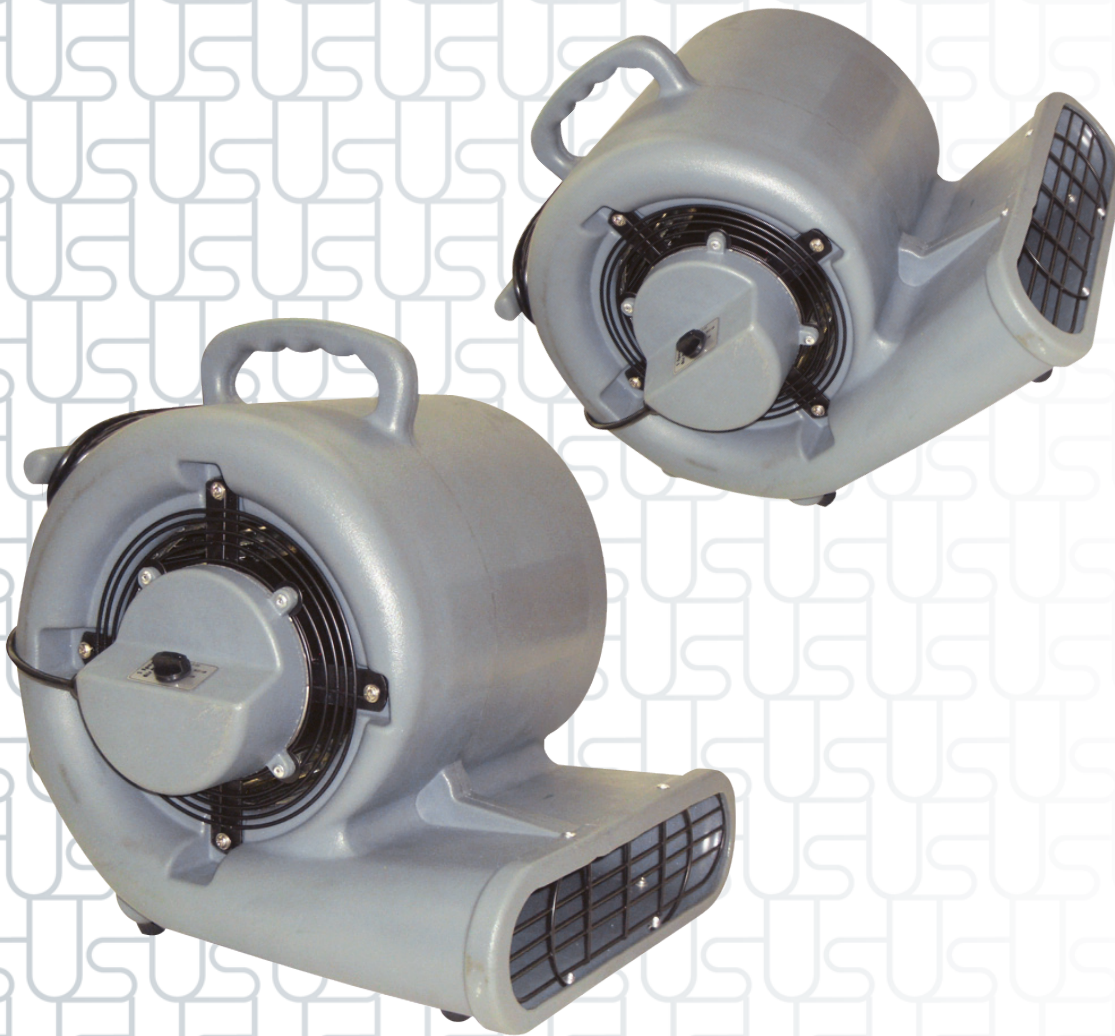


Private Label
Branding
Available!

DISCOVER THE BENEFITS OF THE CORSAIR AIR MOVER

Powerful high airflow dries carpets,
floors, walls and ceilings!



CORSAIR AIR MOVER
3-Speed: 780 RPM, 950 RPM, 1100 RPM



ULTIMATE SOLUTIONS
Together We're Better!

**CALL US TODAY IF YOU HAVE ANY QUESTIONS,
OR WOULD LIKE TO PLACE AN ORDER!**

Ultimate Solutions | Mercury Floor Machines
15571 Container Lane, Huntington Beach, CA 92649

Phone: 888-568-4606 | Fax: 201-568-7962

www.us-group.com | www.mercuryfloormachines.com

Another Innovative
Product from:



SEE THE BENEFITS

of the Corsair 3-Speed Air Mover

Warranty: 10-year warranty on body, 1-year on motor and all electrical components.

- The 1/2 HP, 3-speed motor gives ample power for drying surfaces and moving musty air.
- Includes a 9.5" wide, steel fan blade and frame with a 14" chassis opening.
- Air intake and outlet screens keep airflow free from debris and protect fingers from the powerful steel fan blades.
- Designed to operate in three positions and tilts at both 45- and 90-degree angles. Aim the air stream at the floor to move air and dry carpets or tip back to dry curtains, walls and ceilings.
- Stack up to three air mover units for easier storage.
- Balanced design with molded carrying handle and cord wrap make transportation easy.
- Roto-molded polyethylene body withstands the toughest working environments and resist dents, chips and cracks. It's easy to clean and always looks professional.
- Includes (1) 20-foot, 16/3-gauge safety power cord.

APPLICATIONS

- Ideal for drying carpets, furniture and paint, flood clean-up, moving musty air and more!

SPECIFICATIONS

Model: 90-2000

Motor: 1/2 HP, 115 V

3-Speed Fan: 780 RPM | 950 RPM | 1100 RPM

Air Flow Rates: 1060 CFM | 1360 CFM | 1500 CFM

Body: Molded, High-Density Polyethylene

Fan Size: 9.5" Steel Blade and Frame

Power Cord: (1) 20-Foot, 16/3-Gauge Safety Power Cord

Weight: 31 lbs.

Dimensions: 19.2" L x 14.5" W x 19.5" H

DISCOVER THE POWER OF HAVING OPTIONS

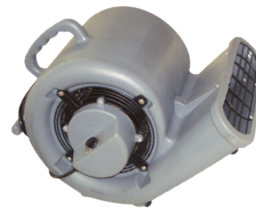
Compare us to the competition – discover the difference!



① Aim Flat

Stack up to 3 units for compact storage!

Handle fits conveniently into the bottom of the air mover to stack three units easily and safely.



② Aim at 45°

Operate at 3 different fan speeds!

Low - 780 RPM at 1060 CFM

Med - 950 RPM at 1360 CFM

High - 1100 RPM at 1500 CFM



③ Aim at 90°

Designed to operate at 3 angles!

Aim at the floor or tip back to move air and dry carpets, floors, furniture, curtains, walls and ceilings!

FEATURES

