

Private Label
Branding
Available!

FIND THE PERFECT FIT FOR THE JOB

Fastest soil pick-up and a
lightweight ergonomic design!



5-PIECE TOOL KIT INCLUDED!



10-0037
3" Round Dust Brush



10-0031
5" Upholstery Tool



10-0032-C
14" Scalloped Floor Tool



10-0033
17" Crevice Tool



10-0029
Aluminum 2-Piece Wand

ACE BACKPACK VACUUM
10-Quart Capacity, 1.5 HP 2-Stage Motor, 1122 Watts



Manufactured with
Pride in the U.S.A.



ULTIMATE SOLUTIONS
Together We're Better!

**CALL US TODAY IF YOU HAVE ANY QUESTIONS,
OR WOULD LIKE TO PLACE AN ORDER!**

Ultimate Solutions | Mercury Floor Machines
15571 Container Lane, Huntington Beach, CA 92649

Phone: 888-568-4606 | Fax: 201-568-7962

www.us-group.com | www.mercuryfloormachines.com

Another Innovative
Product from:



SEE THE BENEFITS

of the 10-Quart ACE Backpack Series

Warranty: 5-year warranty on body, 2-years on motor, 90-days on tools.

- Fastest soil pick-up with a 1.5 HP, 2-stage motor and 120 CFM airflow, making the ACE significantly more proficient than traditional uprights.
- Collects the most soils, leaving exhaust air cleaner with a disposable, heavy-duty paper micro-bag mounted inside a washable cloth shakeout bag.
- Lightweight ergonomic design, with a cushioned back-pad that fits the curve of any operator's back. The comfortable shoulder and waist belt design reduces fatigue, making work easier.
- Two lever-style latches lock the lid to the body and a twist top lid with static-dissipating vacuum hose and swivel cuff allow for left- and right-handed vacuuming.
- Includes easy-to-reach On/Off power switch and (1) 50-foot, 16/3-gauge safety power cord.
- Includes 5-piece tool kit: 5" upholstery tool, 3" round dust brush, 14" scalloped floor tool, 17" crevice tool and 56" 2-piece wand.

APPLICATIONS

- Designed for vacuuming carpet, hard floors and upholstery.
- Worn on the back to allow for easy and quick vacuuming while walking. Ideal for hallways, airplanes and commercial spaces.



MODELS

THE ACE BACKPACK

Model Number: 88-8888

Tank Capacity: 10-Quarts

Airflow: 120 CFM

Power: 1122 Watts

Motor Size: 1.5 HP, 2-Stage

dB: 61

Amps: 9.6

Volts: 115 V

Static/Lift: 95

Operating Sound: 61 dB

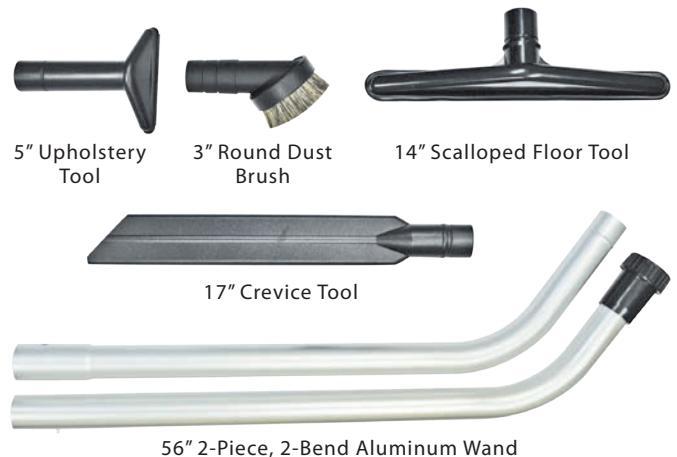
Dust Control: Disposable Paper Bag Mounted inside Washable Cloth Shakeout Bag (Order Replacement Bags 88-8888-BAG -10 Pack)

Height / Weight: 22" / 10.5 lbs.

Powder Cord: (1) 50-Foot, 16/3-Gauge Safety Power Cord

TOOLS

5-PIECE TOOL KIT INCLUDED



* 230 Volt Model Available