

New Equipment Warranty

Limited Warranty

Mercury Floor Machines, Inc. warrants new equipment against defects in material and workmanship under normal use and service to the original purchaser. Any statutory implied warranties, including any warranty of merchantability or fitness for a particular purpose, are expressly limited to the duration of this written warranty. Mercury Floor Machines, Inc. will not be liable for any other damages, including but not limited to indirect or special consequential damages arising out of or in connection with the furnishing, performance, use or inability to use the machine. This remedy shall be the exclusive remedy of the purchaser. The warranty period is subject to the conditions stated below.

5 Years - Motor and Chassis, 1 Year - Service Labor

Mercury Floor Machines, Inc. warrants electric motors and chassis on all floor machines to be free from defects in material and workmanship, under normal use and service for five (5) years to the original purchaser. Parts replaced or repaired under this warranty are warranted for the remainder of the original warranty period. Service labor charges are covered for one (1) year from the date of purchase, when performed by a Mercury-authorized service provider. Freight charges to and from this service provider will be covered for ninety (90) days from the purchase date. After this ninety (90) day period, these freight charges will be paid by the equipment owner. Travel expenses are not covered.

Wear Items on all Machines

Critical Wear Items - bearings, capacitors, clutches, pulleys, rectifiers, relays, switches, wheels, tires and casters are warranted for manufacturing defects for one (1) year from the purchase date.

Normal Wear Items - belts, brushes, bumpers carbon brushes, cords, finishes, squeegees, actuating cables and gaskets are warranted for manufacturing defects for ninety (90) days from the purchase date.

All warranties of motors and associated components will be voided: if the machine is used as a floor sander; if the machine is serviced by anyone other than a Mercury Floor Machines, Inc.-authorized service provider; if the machine is mechanically modified; or if the machine is misused or abused.

The warranty starts on the purchase date by the original purchaser from an authorized Mercury Floor Machines, Inc. distributor, subject to proof of purchase. The machine registration card must be completed and returned immediately at the time of purchase. If proof of purchase cannot be identified, the warranty start date is ninety (90) days after the date of sale to an authorized Mercury Floor Machines, Inc. distributor.



Mercury Floor Machines, Inc.
110 South Van Brunt Street
Englewood, NJ 07631

Phone: 201-568-4606
Toll Free: 888-568-4606

www.mercurymachines.com

Make a copy of this card for future reference.

© 2014 All Rights Reserved Mercury Floor Machines, Inc.

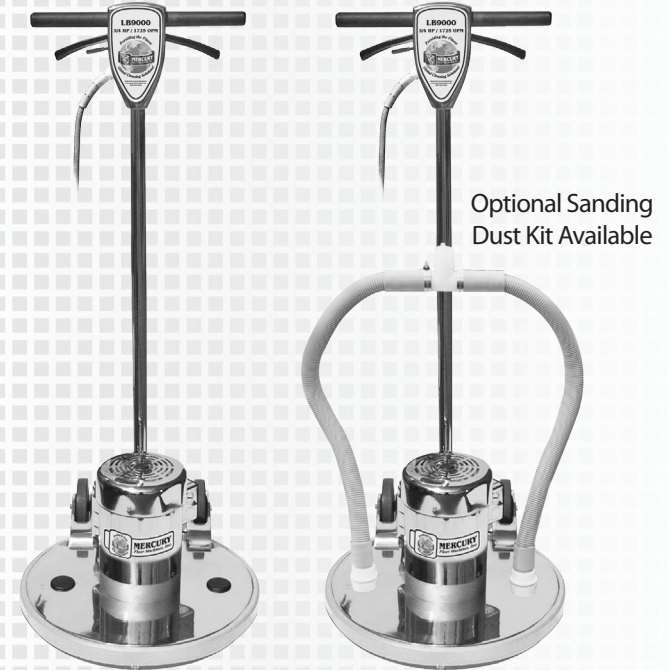
LB9000 LOW BOY FLOOR MACHINE

SAFETY, OPERATION AND MAINTENANCE MANUAL WITH PARTS LIST

Please read before use!

19" ORBITER FLOOR MACHINE
3/4 HP | 1725 OPM

REGISTER
YOUR
MACHINE
ONLINE!



Optional Sanding
Dust Kit Available

19" Apron Sizes

Fully Adjustable

Balanced Design

All Metal Chassis

Quiet Motor

Safe & Easy to Use



IMPORTANT INFORMATION AND SAFETY INSTRUCTIONS

Register your Machine at mercurymachines.com/registration.aspx
Serial No: _____



Dear Valued Customer,

Congratulations on the purchase of your Low Boy Orbiting Floor Machine! The world of floor care is becoming more high-tech and competitive and we strive to provide you with the most innovative products. Our Floor Machine is yet another example of this, bringing a new dimension to floor care and maintenance with its cutting-edge features, quality and value.

Please review this manual paying careful attention to the Safety Instructions section. Keep in mind that any unnecessary damage, neglect or abuse of this machine will void your warranty. You can be confident that simple maintenance will ensure that your Floor Machine provides quality performance for many years to come.

If warranty questions arise, please consult your manual or contact your distributor. Should you have any questions regarding maintenance, replacing parts or ordering parts, please call an authorized distributor.

Before you begin using your Floor Machine, thoroughly review the Owner's Manual.

Again, congratulations on the purchase of your Low Boy Orbiting Floor Machine!

Questions or Comments?

Phone: 201-568-4606

Toll Free: 888-568-4606

Fax: 201-568-7962

info@mercuryfloormachines.com

Mailing Address:

110 South Van Brunt Street, Englewood, NJ 07631

Visit our Web site at www.mercuryfloormachines.com

Register your Machine at www.mercuryfloormachines.com/registration.aspx



Warranty Registration

Please take a moment to register your machine. Fill out the information below and mail back to Mercury immediately.

The warranty starts on the purchase date by the original purchaser, subject to proof of purchase. Please immediately register your machine online at www.mercuryfloormachines.com/registration.aspx or return this Machine Registration Card at the time of purchase. If proof of purchase cannot be identified, the warranty start date is ninety (90) days after the inventory stocking date at the distributor's warehouse.

Machine Model _____ **Purchase Date** _____

Motor Type _____ **Serial No.** _____

Place of Purchase _____

Shipped To _____

Your Name _____ **Phone** _____

E-mail _____ **Fax** _____

Address Line 1 _____

Address Line 2 _____

City _____ **State** _____ **Zip** _____

Comments:

Mail to:
Mercury Floor Machines, Inc.
110 South Van Brunt Street
Englewood, NJ 07631

**See reverse side for warranty information.
Make a copy of this card for future reference.**

LB9000 LOW BOY FLOOR MACHINE

By Mercury Floor Machines, Inc.

Please fill out the following information:

Model No: _____

Serial No: _____

Distributor Name: _____

Distributor Phone No: _____

Date of Purchase: _____



110 South Van Brunt Street, Englewood, NJ 07631
Phone: 201-568-4606 | Toll Free: 888-568-4606 | Fax: 201-568-7962
info@mercuryfloormachines.com | www.mercuryfloormachines.com

Table of Contents

New Equipment Warranty.....	4
1.0 Safety Instructions	5
2.0 Grounding Instructions	6
3.0 Assembly Instructions.....	7
4.0 Operating Tips.....	8
5.0 Trouble Shooting Guide.....	10
6.0 Brush Construction	11
7.0 Pad Driver Construction	11
8.0 Pad Driver Types.....	11
9.0 Install the Sanding Kit Accessory	12
10.0 Flywheel Bearing Set Replacement.....	13
11.0 Handle Schematic Drawing	15
12.0 Handle Parts List.....	16
13.0 Machine Schematic Drawing.....	17
14.0 Machine Parts List	18
15.0 Wheel Plate Assembly with Bearing Parts List	18

New Equipment Warranty

5-year warranty on motor and chassis. 1-year warranty on service labor.

Mercury Floor Machines, Inc. warrants electric motors and chassis on all floor machines to be free from defects in material and workmanship, under normal use and service for five (5) years to the original purchaser. Parts replaced or repaired under this warranty are warranted for the remainder of the original warranty period. Service labor charges are covered for one (1) year from the date of purchase, when performed by a Mercury-authorized service provider. Freight charges to and from this service provider will be covered for ninety (90) days from the purchase date. After this ninety (90) day period, these freight charges will be paid by the equipment owner. Travel expenses are not covered.

Wear Items on all Machines

Critical Wear Items - bearings, capacitors, clutches, pulleys, rectifiers, relays, switches, wheels, tires and casters are warranted for manufacturing defects for one (1) year from the purchase date.

Normal Wear Items - belts, brushes, bumpers carbon brushes, cords, finishes, squeegees, actuating cables and gaskets are warranted for manufacturing defects for ninety (90) days from the purchase date.

All warranties of motors and associated components will be voided: if the machine is used as a floor sander; if the machine is serviced by anyone other than a Mercury Floor Machines, Inc.- authorized service provider; if the machine is mechanically modified; or if the machine is misused or abused.

Warranty Policy

All equipment is inspected and tested before shipping from the manufacturer. All parts are warranted to be new and free from defects in workmanship and material, under normal use to the original retail purchaser. This warranty limits manufacturer's liability for defects in workmanship or materials for replacement of defective parts only. Manufacturer accepts no liability for incidental or consequential damages arisen from the use of any equipment, defective or not. This warranty is in lieu of all expressed or implied warranties and is extended only to the original retail purchaser. Manufacturer sales and service representatives are not authorized to waive or alter the terms of this warranty, or to increase the obligations of the manufacturer under the warranty. Parts replaced or repaired under warranty are warranted for the remainder of the original warranty period.

Freight charges and travel charges to and from the service provider shall be covered for ninety (90) days from the original purchase date. After this ninety (90) day period, freight charges shall be paid by the equipment owner, subject to manufacturer discretion. Certain circumstances may require additional consideration. No travel charges shall be covered after ninety (90) days.

Manufacturer covers up to 1-year (365 days) of service labor at manufacturer's calculated hourly labor rate/repair time when performed by a manufacturer's authorized-service provider. Ultimately, labor reimbursement costs are at the discretion of the manufacturer. After 1-year, the original retail purchaser is responsible for all labor costs with no manufacturer reimbursement.

Manufacturer charges a 15% restocking fee for any items that are being returned to stock. Items must be new, unused and free of damage. Only good for up to 1-year (365 days). After 1-year, manufacturer does not accept the return of any item(s) for a reimbursed price. Authorized warranty replacement parts need to come directly from the manufacturer. Use of any other parts will void warranty. Manufacturer does not reimburse for parts used by the customer that were not supplied directly for the machine under warranty.



Mercury Floor Machines, Inc.

110 South Van Brunt Street
Englewood, NJ 07631

Phone: 201-568-4606
Toll Free: 888-568-4606

www.mercuryfloormachines.com

Notes:

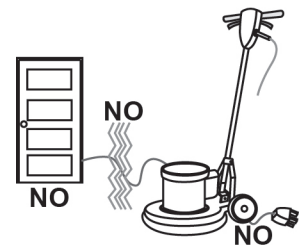
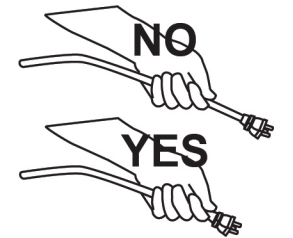
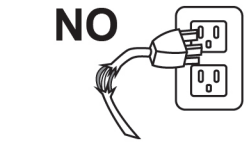
1.0 Safety Instructions

READ THIS MANUAL BEFORE OPERATING THE LOW BOY FLOOR MACHINE. KNOW THE PROPER OPERATION, SAFETY INSTRUCTIONS, CORRECT APPLICATIONS AND THE LIMITATIONS OF THIS EQUIPMENT **BEFORE USE**.

Reduce the Risk of Fire, Electric Shock or Injury

DO NOT USE ON WET SURFACES. DO NOT EXPOSE TO RAIN. STORE INDOORS.

- The floor machine is designed for indoor use only. Do not use outdoors. Do not expose to rain.
- DO NOT wash the motor with flowing water. If the motor gets wet, seek authorized service.
- Keep the vents on the air-cooled motor free from debris. DO NOT operate with the motor covered or with vents blocked. DO NOT use this machine as a floor sander.
- Never operate the floor machine near flammable dusts, liquids or vapors. Never use flammable solvents as a cleaning agent. Engine sparks and operating heat can cause fire.
- Never handle electrical equipment with wet hands. Never operate this floor machine with bare feet.
- Unplug the floor machine when not in use and when servicing the equipment. To unplug, grasp the plug not the cord.
- DO NOT operate the floor machine with damaged handle controls, cord or plug. If the equipment is not performing properly, seek repair from a qualified service supplier.
- This floor machine is constructed with electrical grounding at the plug. Operate only when connected to a properly grounded outlet. See section 2.0 for grounding details.
- Prevent electrical cord abuse. Do not close a door upon the cord, drive equipment over it, or run the floor machine over it. Do not expose the cord to hot surfaces. Do not lift, pull or carry this floor machine by the cord.
- Never operate the floor machine over sharp objects that can be thrown out and harm the operator and damage the floor. Sweep hard floors before scrubbing or buffing.
- Train your staff in proper use of this floor machine.



WARNING – RISK OF EXPLOSION. When using this machine as a floor sander, sanding can produce an explosive mixture of fine dust and air. Use any floor sanding machine only in a well ventilated area free from any flames or sparks. **WARNING OF POTENTIAL INJURY.** THIS MACHINE HAS MOVING PARTS – TO REDUCE RISK OF INJURY, UNPLUG BEFORE SERVICING.

2.0 Grounding Instructions

DANGER: IMPROPER GROUNDING METHOD CAN RESULT IN A RISK OF ELECTRIC SHOCK.

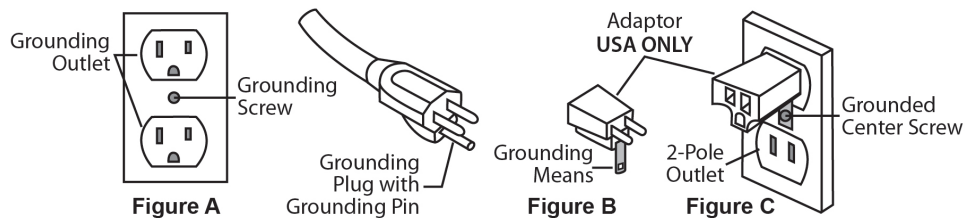
Electrical equipment must be grounded. If it should malfunction or breakdown, grounding provides a path of least resistance for electrical current and reduces the risk of electric shock. The vacuum is equipped with a cord containing a grounding conductor and grounding plug. The plug must be inserted into an appropriate outlet that is properly installed and grounded in accordance with all local codes and ordinances.

If repair or replacement of the cord or plug is necessary, **DO NOT** connect the grounded wire to a flat bed terminal. The green insulated wire, with or without yellow stripes, is the grounding wire.

The Low Boy Floor Machine operates on a 10.8 amp nominal 115V, 60 Hz, A.C. power circuit (motors may be custom wired at the factory 220V, 50 Hz international operation). The amp, hertz and voltage ratings are listed on the motor spec label found on each floor machine. Using voltages above or below those indicated on the spec label will damage the motor. Always check your local voltage requirements.

This floor machine is for use on a normal 120 volt circuit. It has a grounded plug that fits the outlet illustrated in Figure A. If a properly grounded outlet is not available, a temporary adapter, such as the adapter illustrated in Figure B and C, may be used to connect the plug into a 2-pole outlet, as shown in Figure C.

The temporary adapter should be used only until a properly grounded outlet, Figure A, can be installed by a qualified electrician. The green color rigid ear lug or grounding means extending from the adapter must be connected to a permanent ground, such as a properly grounded outlet box cover. Whenever the adapter is used, it must be held in place by its grounding means and a metal screw, as shown in Figure C.



WARNING:

Improper connection of the equipment grounding conductor can result in a risk of electric shock. Check with a qualified electrician or service person if you are in doubt as to whether the outlet is properly grounded. **DO NOT** modify the plug provided with the equipment. If it will not fit into the outlet, have a proper outlet installed by a qualified electrician.

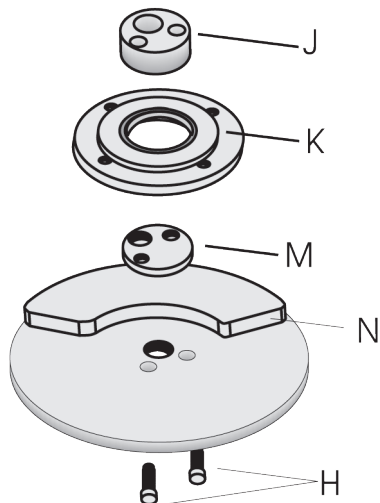
The Low Boy Floor Machine is built with a 50 foot (15 M) safety cord which plugs directly into an approved outlet. Use of extension cords is **NOT RECOMMENDED**.

NOTE: In Canada, the use of a temporary adapter is not permitted by the Canadian Electrical Code. This adaptor may not be used in Canada.

Notes:

14.0 Machine Parts List

ITEM	DESCRIPTION	PART NO.	QTY.
44	Bolt - Handle Bracket Mounting	B-22	2
45	Handle Bracket	A-100	1
46	Axel Nut	B-77	2
47	Nylon Washer	O-48	4
48	5" Non-marking Wheels	M-246	2
49	Axel	B-76A	2
50	Apron Casting with Wheel Mounting Ears	A-175	1
51	Nut for Bracket Bolt	B-27	2
52	Cap Plugs	O-205	2
53	Female Snap Riveted to Apron Casting	O-23	5
54	Motor Bolt	B-143	4
55	19" Bumper - Yellow	M-232-19/Y	1
56	Nut Jam	O-03-0056601	1
57	Fly Wheel Plate	O-53214-01	1
58	Pan Bottom Assembly (Drive Plug)	O-09-53246-51	1
59	Screws for Pan Bottom Assembly	O-03-00568	4
60	Motor BDP-C 3/4 HP	MOTOR BDP/C	1



15.0 Wheel Plate Assembly with Bearing Parts List

ITEM	DESCRIPTION	PART NO.	QTY.
N	Flywheel Plate	O-53214-01	1
K	Retainer, Bearing and Ball Assembly	O-09-53266-01	1
M	Spacer - Orb	O-53163-01	1
J	Plug - Orb	O-53160	1
H	Hex Bolt - 1/4 x 20 x 3/4	O-03-00567-01	2

3.0 Assembly Instructions

3.1 Handle Installation

This machine handle (1) has been custom fit to its **mounting bracket (2)** at the factory and then taken apart for shipping. For easy assembly, make sure that the handle number on the tag (see right) matched the serial number stamped on the chassis.

You will need two 9/16" wrenches to complete the assembly:

1. Handle Assembly

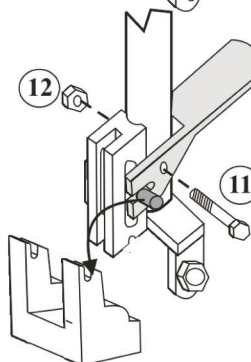
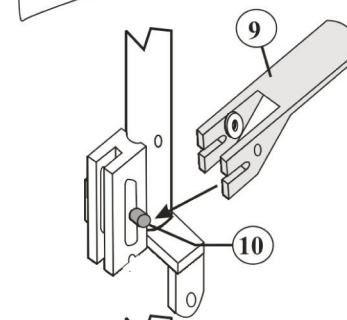
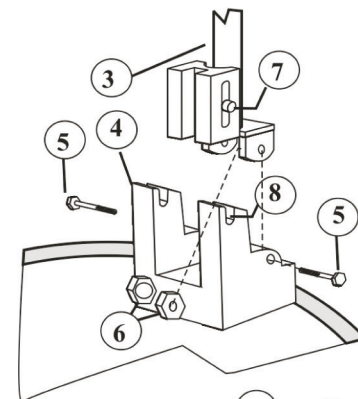
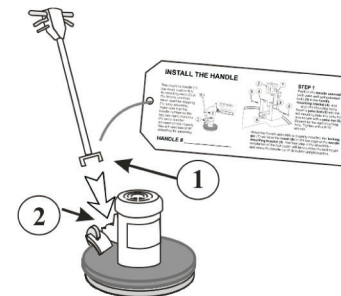
- Position the **handle assembly (with yoke and spring-loaded lock) (3)** in the **handle mounting bracket (4)**, and align the mounting holes. Insert a **yoke bolt (5)** into the left mounting hole and yoke hole and secure with a **yoke nut (6)**. Repeat for the right mounting hole. Tighten with 9/16" wrenches.
- When the handle assembly is properly installed, the **locking pin (7)** will sit in the **notch (8)** on the top edge of the **handle mounting bracket (4)**. The final step in the assembly - installation of the foot pedal - will let you raise the locking pin and move the handle out of its locked upright position.

2. Install the Foot Pedal (9)

- Slide the **foot pedal (9)** onto the spring-loaded **locking pin (10)** on the handle lock. The pedal is constructed with nylon washers that will sit on both sides of the handle tube.
- Raise or lower the end of the foot pedal to line up the hole in the pedal with the hole on the side of the handle. Insert the pedal bolt (11) through the hole in the side of the pedal and through the hole in the handle. Secure with the **pedal bolt nut (12)**.

3. Check Operation of the Foot Pedal

- When you push down on the foot pedal, the spring loaded pin will rise, letting the handle tip back. When you tip the handle forward to the vertical position, the pin will ride up the top edge of the handle bracket and fall into the locking notch on the top of the bracket.

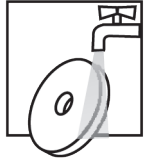


12.0 Handle Parts List

ITEM	DESCRIPTION	PART NO.	QTY.
1	Switchbox Back Cover	A-104	1
2	Handle Tube Screw	B-23	2
3	Switch Box Closing Screws	B-21	4
4	Strain Relief Clip	M-213	1
5	Switch Plate Screw	B-68	2
6	Rubber Spacer - Black	M-218B	2
7	Hand Grip	M-218	2
8	Handle Tube Insert	M-247	1
9	Handle Tube Assembly	M-206	1
10	Cable Hook Screw	B-2	2
11	Cable Hook	A-164	1
12	Yoke Tube Mount Bolt	B-18A	2
13	Yoke Nut	B-10	1
14	Yoke	A-1001A	1
15	Yoke Bolt	B-14	1
16	Handle Tube Cable	G-16	1
17	Black Rubber Cable Connector	M-249	1
18	Cable Grommet	B-63	1
19	50-Foot Cable 14/3 - Yellow	14-50-Y	1
20	Insulated Flag Wire Connector	G-48	5
21	On-off Switch And Plate Assembly	G-30-AB	1
22	Switch Mounting Plate	G-30-B	1
23	Ground Wire Screw	B-1	2
24	Int. Tooth Lockwasher	B-35	1
25	Flat Hex Nut	B-33	1
26	Trigger Return Spring	G-30-C-T057	1
27	Label - Switchbox		1
28	Switch Box Front	A-103	1
29	Wire Nut	G-47	1
30	Triggers	A-105	2
31	16" Crossbar	M-211-A	1
32	Safety Interlock Assembly	SIA-1	1
33	Trigger Pins	B-70	2
34	Cross Bar Screw	B-22	2
35	Cap - Switchbox back	O-205B	1
36	Acorn Nut to hold foot pedal to handle	B-44	1
37	Foot Pedal	C-305	1
38	Nylon Washer glued to foot pedal	O-22	2
39	Axel to hold foot pedal to handle	O-26	1
40	Large Milled Pin	O-206	1
41	Block Spring	C-306	1
42	Small Pin Under Block	O-27	1
43	Aluminum Block	C-300	1

4.0 Operating Tips Continued

- For indoor use only. Sweep abrasive soils before scrubbing.
- While the brush or pad driver is spinning, keep the floor machine moving to avoid “donut” burns on the floor.



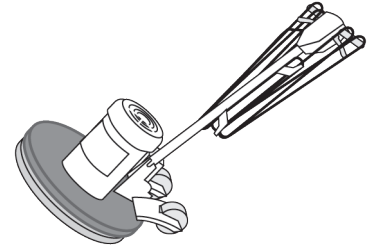
To Start Operation Continued:

- Squeeze the dual triggers to release power to the motor. Once power is on, either trigger will keep power to the motor.
- To stop the Low Boy Floor Machine, release both triggers.



4.1 To Store your Machine

- Lock the handle in the “up” position. Wind the cable around the handles and the bottom cable hook.
- Tilt the machine back and remove the pad driver or brush using a locking tool. Never store the floor machine standing on the brush.
- Wash brushes or pads and hang to dry. Never store machine standing on the brush.



- Check and clean pads after each operation. Remove soil and chemical buildup. Replace worn or damaged pads.
- Check the triggers and switches for proper operation.
- Repair or replace damaged skirts and dumpers.
- Use air pressure or vacuum to remove dust and debris from the motor vents.
- Inspect and maintain equipment on a regular schedule for best results. Report problems and repair promptly.

4.2 Transport

To transport this floor machine from the janitor’s closet to the work area:

- Lock the handle in the “up” position. Wind the cord around the handles and the bottom cord hook.
- Tip the machine back onto the transport wheels. Push or pull the machine by the handle, not by the cord or any other part of the machine. Travel carefully.

5.0 Troubleshooting Guide

Never operate this floor machine when the equipment is not performing as expected or when any part is visibly damaged. The cause and solution for some basic problems are described below. When repair is needed, take the equipment to an authorized repair service center.

5.1 Floor Machine will not Run

- Circuit breakers are tripped in the building. **Check and reset.**
- Equipment is unplugged. **Check plug wall and at machine base. Plug in.**
- Power cord failure. **Lock the handle up and tip the motor back. Unplug the cable at the motor and plug the motor into the working power cable.**

IMPORTANT! THIS IS JUST FOR TESTING. When you do this, you have removed the safety handle controls from the circuit and you are sending power directly to the motor. If the motor now spins, the problem is in the cord of the handle assembly. **Seek authorized repair service.**

- If the motor still does not spin, the problem is either in the male connection at the motor base or in the motor. **Seek authorized repair service.**
- Motor sparks or smokes. **Seek authorized repair service.**

5.2 Electrical Shock to Operator

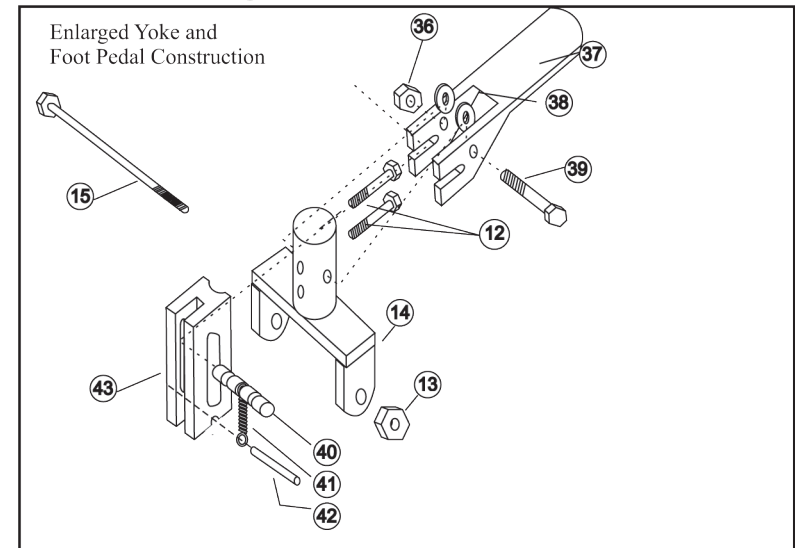
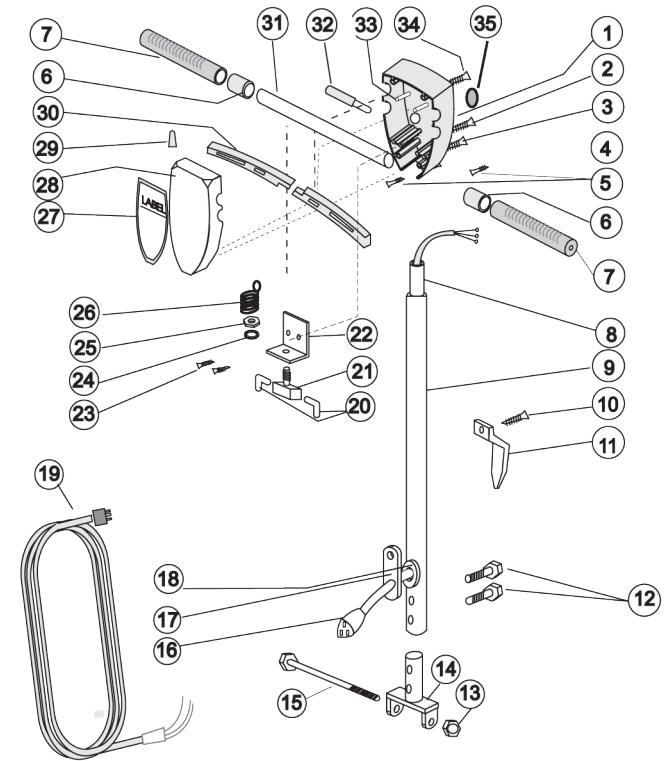
- Equipment wiring failure or electrical short in the machine. **Seek authorized service.**
- Poor grounding or no grounding. **Test the outlet with a ground fault interrupter. Retain certified electrician to inspect and repair grounding. NEVER clip off the ground plug on your cord.**
- Repeated circuit breaking. High amp draw and circuit breaking can be an electrical or mechanical problem. **Seek authorized repair service.**

5.3 High Vibration

- Pads are not centered on the pad driver. **Tip machine back and re-center the pad.**
- Uneven wear or warp to pad or brushes. **Replace.**
- Machine chassis is damaged by dropping. **Replace.**

WARNING OF POTENTIAL INJURY. THIS MACHINE HAS MOVING PARTS TO REDUCE RISK OF INJURY, UNPLUG BEFORE SERVICING.

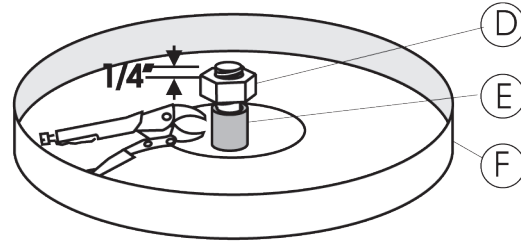
11.0 Handle Schematic Drawing



10.0 Flywheel Bearing Set Replacement Continued

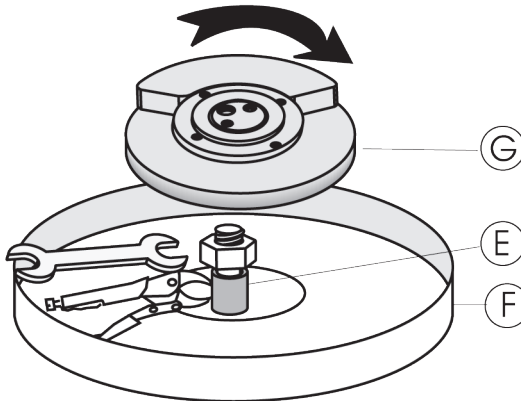
8. Adjust the jam nut (D) on the motor shaft (E) so that 1/4" of the shaft is visible.

Now, grasp the motor shaft (E) between the jam nut (D) and the cast apron (F).



9. Screw the flywheel plate assembly (G) clockwise onto the shaft **until it stops at the jam nut.**

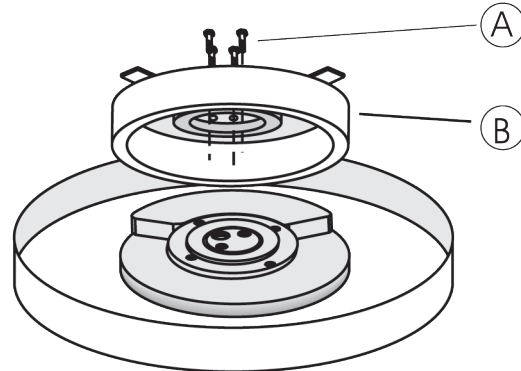
10. Now, finish tightening the jam nut against the flywheel plate by grasping the jam nut (D) with your 1" open ended wrench, and tap with a hammer, counter-clockwise.



11. Remove the wrench and vice-grips, and test your work by spinning the flywheel by hand. The wheel should rotate freely.

12. Replace the pan bottom cover (B) Install and tighten the four allen screws (A).

13. Re-attach the handle. Plug in, and test the machine.



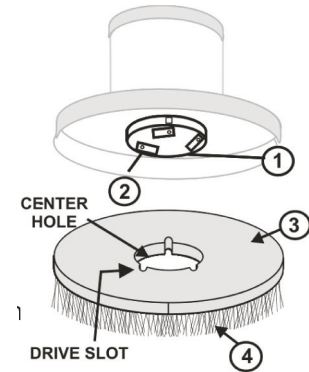
6.0 Brush Construction

Brushes and pad drivers mount quickly and reliably on the **drive hub (1)** and are held in place with three adjustable **locking ears (2)** that are riveted to the drive hub. The locking key is needed to complete brush mounting.

The **16" brush block (3)** is constructed of molded plastic with a 7.5" center hole and 3 drive slots. These drive slots align with the riveted shoulders on the drive hub and are the surface that the motor pushes against to spin the brush.

The **bristle material (4)** that actually does the scrubbing is 1-3/4" long. Holes are drilled in the block and bundles of bristles are folded in half, forced into the hole, and stapled in place (staple-set).

When the bristles wear down to less than 1/2" long, they have little flexibility and it is time to replace (brush information on page 12).



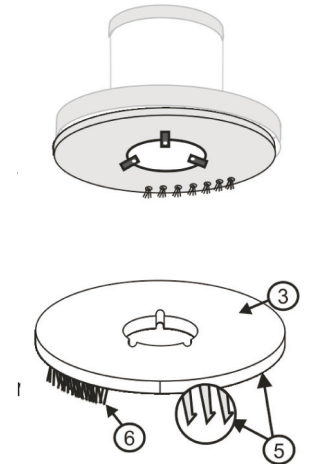
7.0 Pad Driver Construction

To scrub or polish with a **non-woven pad**, use a **pad driver** to connect the pad to the Low Boy Floor Machine.

The injection molded **brush block (3)** is constructed with short "velcro-like" **pad-holding hooks (5)** or 1/2" long, **stiff poly bristles (6)**.

Pad drivers use the same mounting design as brushes (described in section 6.0). Center a pad under the pad driver and lower the machine onto the floor.

No centering / locking hardware is required.



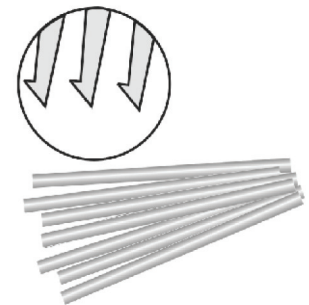
8.0 Pad Driver Types

Pad Drivers are available (as a separate-purchase accessory) with two different bristle types.

Hook or "velcro-like" style pad drivers and poly bristle pad drivers are available. **Hook Style Pad Drivers** use an injection-molded sheet of hooks that is mounted on the same block used for brushes. Hooks work with all pad types.

Order micro hook style pad driver (Model No. 1914).

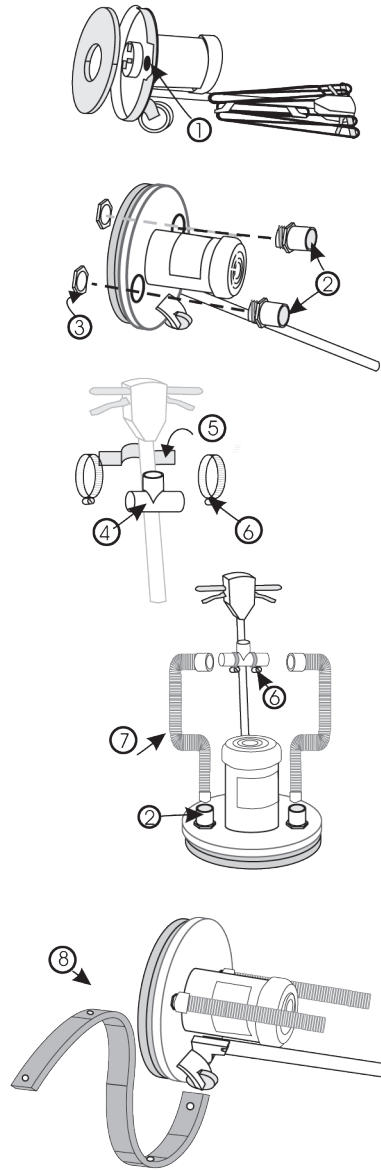
Bristle Style Pad Drivers are built with a green, .040" poly bristle that is trimmed to 1/2". Bristles work with all pad types. **Order bristle-style pad driver (Model No. 1915).**



9.0 Install the Sanding Kit Accessory

The Sanding Kit Accessory contains adaptors, connectors and vacuum hoses designed to collect and direct sanding dusts into your vacuum system. Follow these steps for easy installation.

1. Tip the **Low Boy Floor Machine** back and remove the pad driver to expose the underside or the apron and the two exhaust vents with plastic plugs (1).
2. Remove the **two black plastic plugs (1)** by pushing from the bottom side of the apron. Keep these plugs in a safe spot. If ever removing the sanding kit for other floor care tasks, re-install plastic plugs.
3. Insert a **molded exhaust fitting (2)** into each of the exhaust vents. From the bottom side of the machine screw the **locking ring (3)** onto the threaded neck of the **exhaust fitting (2)**. Tighten the ring by hand. Do not over-tighten. Next, tip the machine up.
4. Mount the **molded plastic exhaust "T" (4)** onto then buffer handle using the **"U" shaped mounting bracket (5)** and the **screw mounting clamps (6)** (as shown at right). Leave these fittings loose until step 5 is complete.
5. Install the **flexible vacuum hoses (7)**. Connect each exhaust fitting to the exhaust "T" using the flexible vacuum hoses (as shown at right). The larger end of the hose fits over the exhaust "T" on top. The smaller end of the hose fits inside the exhaust fitting on the apron. Next, adjust the height of the exhaust "T" so that the hose has no kinks or stretches across the length of the handle travel. Tighten both clamps with a screwdriver.
6. Mount the **flexible skirt (8)**. Tip the machine back onto the handle. Start at the back of the machine, snapping the male connectors of the skirt into the female fittings on the apron. The skirt may need to be stretched in order to complete the process.
7. Mount the **pad driver, pad, and sanding screen**. Tip the machine upright.
8. Connect a **backpack or canister vacuum** to the remaining leg of the "T". The floor machine is ready to sand.



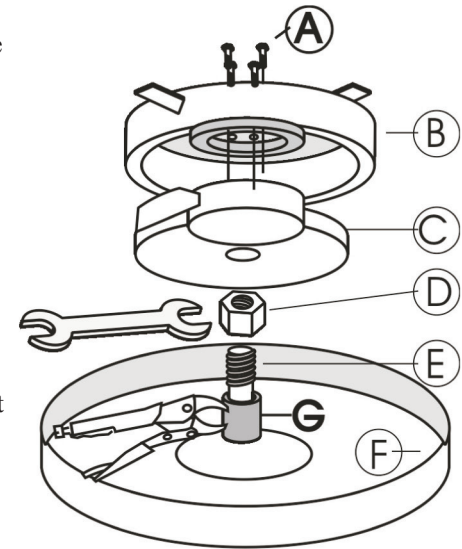
10.0 Flywheel Bearing Set Replacement

The orbiting brush drive offers some unique scrubbing results, but also puts a major load on the bearing assembly. Occasionally, bearing replacement will be required. For easiest and best results, remove the machine handle (following the steps on page 7).

Stand the machine upside down on a work bench. Secure the machine to prevent a fall.

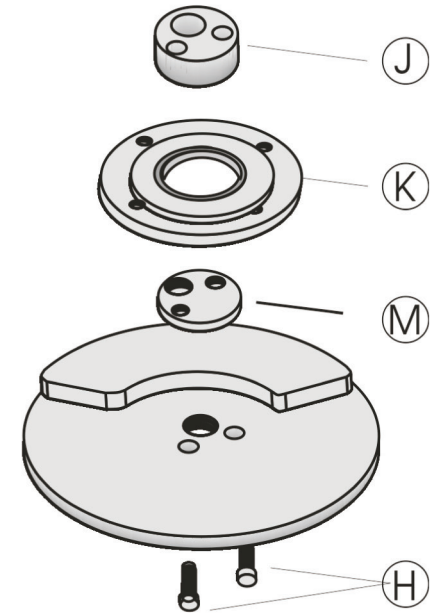
1. Remove the four allen bolts (A). Remove the pad bottom assembly (B) to expose the bearing assembly.
2. Use a vice grip pliers to secure the motor shaft (E) between the jam nut (D) and the buffer cast apron (F). Place the pliers over the black plastic sleeve (G) to prevent thread damage.
3. Grasp the jam nut (D) with a 1" open-ended wrench. Tap with a hammer clockwise to loosen the nut.

When the jam nut is loose, you can remove the flywheel plate (C) by turning it counter-clockwise.



REPLACE THE BEARING ASSEMBLY

4. Loosen the two hex bolts (H), to disconnect the top orb plug (J) from the bottom orb spacer (M). Grasp the bolts and lift off the top orb plug.
5. Remove the bearing assembly (K).
6. Install the new bearing assembly (PN# 09532666-51)
7. Align the bolt holes on the top orb plug (J) with the bottom orb spacer (M). Reinstall the two hex bolts (H) and tighten in place.



WARNING – Risk of Explosion. Floor sanding can result in an explosive mixture of find dust and air. Use this floor sanding machine only in a well ventilated area.